



IT MODERNISATION RECOVERY INCREMENT 1 WP07 - SYSTEMS INTEGRATION AND CORE CAPABILITIES

INTERFACE DEFINITION TABLE (IDT)

Effective date: 30-Jun-23
Version No: 1.2
Issued by.....: ITM Project Office
Approved by.....: Martin Diepstraten, POLARIS Technical Design Authority

Document Control

Title: IDD Table
Version: 1.2 - RELEASE
Date: 30-Jun-23
Classification: NATO UNCLASSIFIED
Filename: NU-ITMRC1-Interface Definition Table (IDT)
Storage location: IDD Table

Table of Amendments

Version	Date	Description
0.7	13 Dec 22	QA Validation, adaptation to standard document and naming
1.0	20 Dec 22	Initial release for Checkpoint-1.
1.1	25 April 23	Inclusion of DC change request and adding additional interfaces that were announced to be completed later in version 1.0. Outstanding is Patching Services Interfaces.
1.2	30 June 2023	Domains SMC related detailed interfaces will be taken on with the contractor in the design phase.

Stakeholders Details

Role	Name	Signature
Author	Kemal Utkuel Kemal.Utkuel@ncia.nato.int Senior Scientist, NCI Agency	
Reviewer	Marc van Selm Marc.Vanselm@nr.ncia.nato.int Enterprise Architect, NCI Agency	
Approver	Martin Diepstraten Martin.Diepstraten@ncia.nato.int POLARIS Technical Design Authority, NCI Agency	

Contents

1.	INTRODUCTION.....	5
1.1.	Interface Definition Table (IDT) Model.....	5
1.1.1.	Interface Definition Modelling Concept.....	5
1.1.2.	Services Overview.....	8
1.1.3.	Information Exchange Requirements	8
1.1.4.	Interfaces	8
1.2.	Interface Definition Document Table Elements	9
1.3.	References.....	10
2.	INTERFACE DEFINITION TABLE (IDT).....	11
2.1.	NATO Enterprise Services – Provider	11
2.2.	Enterprise Core Services (ECS) – Provider	13
2.3.	Enterprise Core Services (ECS) Email Messaging – Provider.....	13
2.4.	Enterprise Core Services (ECS) Email Messaging - Consumer	15
2.5.	Enterprise Core Services (ECS) Skype for Business (SfB) - Provider	18
2.6.	Enterprise Core Services (ECS) Skype for Business (SfB) – Consumer	19
2.7.	Enterprise Core Services (ECS) Portal Services - Provider	22
2.8.	Enterprise Core Services (ECS) Portal Services - Consumer.....	23
2.9.	Enterprise Core Services (ECS) Database Services - Provider.....	26
2.10.	Enterprise Core Services (ECS) Database Services - Consumer.....	26
2.11.	Enterprise Core Services (ECS) Directory Services - Provider	29
2.12.	Enterprise Core Services (ECS) Directory Services - Consumer.....	30
2.13.	Enterprise Core Services (ECS) Domain SMC Services - Provider.....	33
2.14.	Enterprise Core Services Cyber Security Services – Provider.....	33
2.15.	Enterprise Core Services Cyber Security Services – Consumer	33
2.16.	Client Provisioning Services (CPS) Desktop Provisioning - Provider.....	34
2.17.	Client Provisioning Services (CPS) Desktop Provisioning - Consumer	34
2.18.	Client Provisioning Services (CPS) Application Provisioning - Provider	38
2.19.	Client Provisioning Services (CPS) Application Provisioning - Consumer	39
2.20.	Client Provisioning Services (CPS) Domain SMC - Provider	43
2.21.	Client Provisioning Services (CPS) Domain SMC - Consumer.....	43
2.22.	Client Provisioning Cyber Security Services - Provider.....	45
2.23.	Client Provisioning Cyber Security Services – Consumer.....	46
2.24.	Client Provisioning Services (CPS) Campus LAN Services - Consumer	46
2.25.	Client Provisioning Services (CPS) User Profile Services- Consumer.....	48
2.26.	Client Provisioning Services (CPS) Print and Scan Services - Consumer.....	49
2.27.	Print and Scan Contractor-Owned, Contractor-Operated (COCO) services - Provider	50
2.28.	Privileged Access Management (PAM) – Provider.....	50
2.29.	Privileged Access Management (PAM) – Consumer	52
2.30.	Campus LAN – Provider	53
2.31.	Campus LAN – Consumer.....	53
2.32.	Cyber Security (CS) Services – Provider	54
2.33.	Cyber Security (CS) Services Cyber Security Monitoring – Provider.....	55
2.34.	Cyber Security (CS) Services Cyber Security Monitoring – Consumer.....	56
2.35.	Infrastructure as a Service (IaaS) - Provider	56
2.36.	Infrastructure as a Service (IaaS) - Consumer.....	58
2.37.	Enterprise SMC - Provider.....	60
2.38.	Enterprise SMC - Consumer.....	62
2.39.	Enterprise Core Services (ECS) IREEN Portal Services - Consumer.....	68
2.40.	Enterprise Core Services (ECS) IREEN Database Services - Consumer.....	69
2.41.	Enterprise Core Services (ECS) IREEN Directory Services - Consumer.....	69
2.42.	Client Provisioning Services (CPS) IREEN Desktop Provisioning - Provider.....	70
2.43.	Client Provisioning Services (CPS) IREEN Desktop Provisioning - Consumer	70
2.44.	Client Provisioning Services (CPS) IREEN Application Provisioning - Consumer	70
2.45.	Infrastructure as a Service (IaaS) IREEN Service - Provider	71
2.46.	Infrastructure as a Service (IaaS) IREEN Service ON@NU- Consumer.....	72
2.47.	Application Packaging Services – Provider	72
2.48.	Application Packaging Services – Consumer.....	73
2.49.	Business Areas Application Services – Provider.....	73

2.50.	Business Areas Application Services – Consumer.....	73
2.51.	User Migration and Transition to Operation – Provider	77
2.52.	User Migration and Transition to Operation – Consumer	77

List of Figures

Figure 1	Architecture Design Products.....	5
Figure 2	Service interface definition concept – NAFv4 S1	6
Figure 3	Modelling of data exchange between services and the associated interfaces	7
Figure 4	Most relevant technical services in scope this document	8
Figure 5	High-level interface view – NAFv4 S3	9

1. INTRODUCTION

0001 This Interface Definition Table (IDT) is part of the authoritative source of information regarding Architecture and Design aspects.

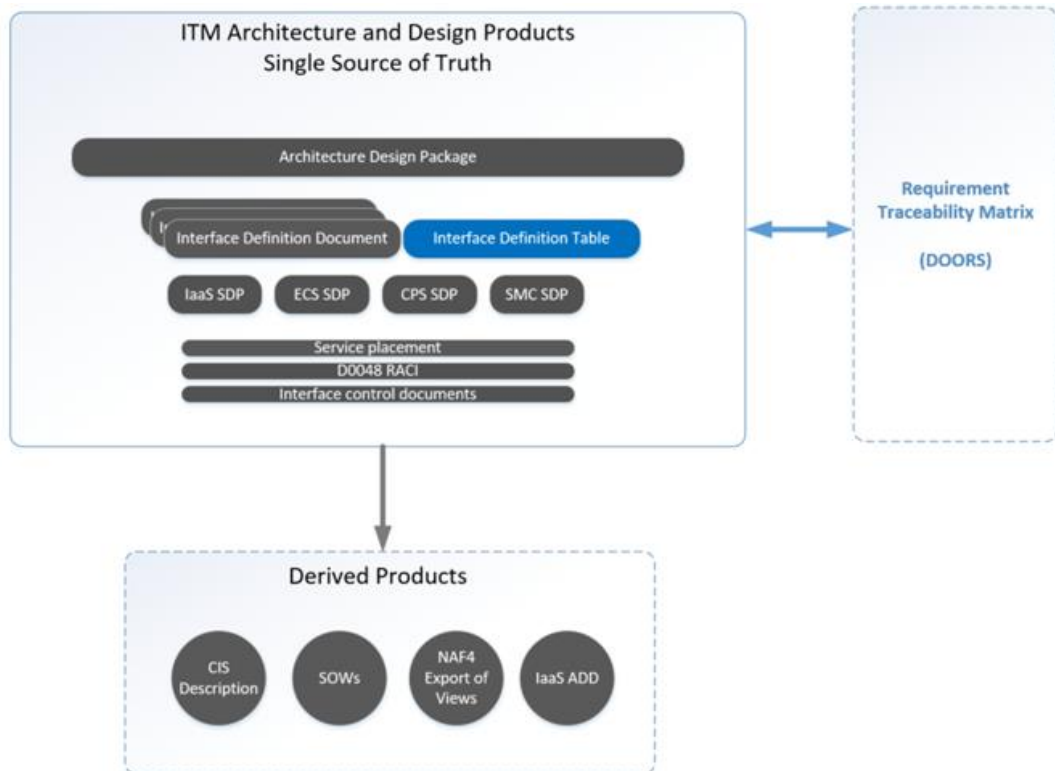


Figure 1 Architecture Design Products

0002 This paragraph describes the modelling of the service interfaces into a table of interfaces. This artefact is referred to as the Interface Definition Document Table.

0003 The actual Interface Definition Document Table, identifying for each relevant service the service interfaces and input/output relationships is included in the Section 2.

1.1. Interface Definition Table (IDT) Model

0004 This paragraph describes the modelling convention and the concepts used to model the exchange between services and to model the service interfaces.

- (1) introduces the modelling concept
- (2) summarizes the (technical) Communication and Information Systems (CIS) services relevant for WP7 for ease of reference
- (3) provides a reference to the Information Exchange Requirements (IER) definition for ease of reference
- (4) identifies the high-level and aggregated service interface view to be further elaborated in the interface definition document table.

1.1.1. Interface Definition Modelling Concept

0005 This paragraph describes the high-level modelling concept. It introduces the concept of information exchange, provider and subscriber interfaces and the concept of provided and dependent services that the architects use throughout this architecture.

0006 The table of interfaces across (sub) services is modelled through a concept of IER between (sub) services, served through an interface. In this context, "service" may refer to a technical

service but may also refer to a business service (which in turn may be supported by underpinning technical services and human-executed processes).

0007 The above mentioned interface, across which an IER is realized, is per definition provided by only one of the services that take part in this exchange. The provider service defines the detail of the interface such as interface profiles, standards, protocols, etc. This interface is referred to as the “provider interface”. The other side of the exchange is the subscriber. The subscriber may be a service itself, or the subscriber may be a user node. The subscriber uses the interface definition by the provider service and refers to the interface as a dependent interface.

0008 Obviously the subscriber will have to realize the technical counterpart of the provider interface, the “subscriber interface” to reach the provider counterpart of the exchange. However, this architecture abstracts the subscriber interface and aggregates the subscriber and provider interface into a single object, which is defined and specified by the providing service. This modelling convention is further described in Figure 2 below.

0009 As a real-life example of the concept described above, of the provider / subscriber concept, consider the following example. Consider a shop, a retail store. The provider service is represented by the shop. The provider interface is the person behind the counter. The subscriber is the person that is requesting a product or a service from the person behind the counter. I.e. the customer at the counter in this example is the subscriber; the counter represents technical means connecting the provider and the subscriber.

0010 In this architecture, the concept of provider / subscriber is opaque to “push” or “pull” service provisioning. Hence, who is the provider and who is the subscriber is independent of who initiates the connection to exchange data. Referring back to the example of the shop, the architecture is agnostic if the provider delivers the service at home or that that the customer goes to the shop and if this is a subscription model or an on -demand request; from the perspective of the architecture the service and the interface is still what the service provider has defined.

0011 The diagram below illustrates this service provider / subscriber concept and taxonomy.

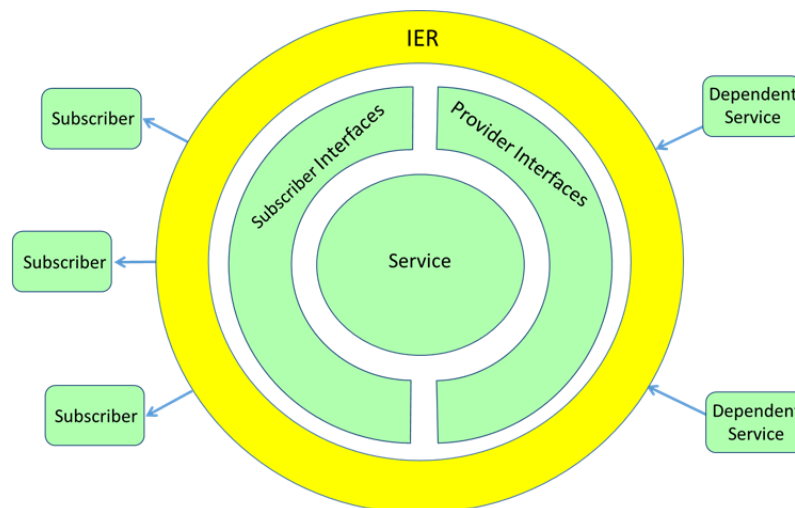


Figure 2 Service interface definition concept – NAFv4 S1

0012 The concept of service provider / subscriber concept and taxonomy, introduced in Figure 2 above, is formalized through the “modelling of data exchange between services and the associated interfaces” view.

0013 Figure 3 below shows a data exchange between CIS Service A and CIS Service B. This exchange is the basis of the interaction between two services. The exchange is served through the CIS Service B Interface and described through the CIS Data Exchange object. The latter is modelled in ArchiMate as an interaction, i.e. a collective behaviour (the exchange of data). In other words, the CIS Data Exchange is a technical representation of the IER.

0014 Specifically, the view below describes the methodology for modelling the data exchange between services and modelling the associated interfaces. This methodology is based on ArchiMate 3.1 and, as modelled in Figure 3 below, describes an exchange between technology services (ICT services). However, the same methodology equally applies to the exchange between business services. Hence, the exchange between / with business services can be modelled the same way using business layer elements instead, including exchange between a technical and business service.

0015 The exchange, the IER is modelled as the interaction describing the exchange, and a flow (of data) from one service to the other. These exchanges, modelled as an interaction, are unidirectional (ignoring any signalling, which may be bidirectional). That means that a bidirectional exchange, between services, is modelled through two interactions; one from A to B and one from B to A.

0016 As a matter of principle, there is only one interface. It is the provider service that defines the interface as part of its service architecture building block (ABB), the consuming service is merely served through this provider interface. The consuming service's IDD and Service Design Package (SDP) refers to the provider's interface definition in the provider's IDD and SDP.

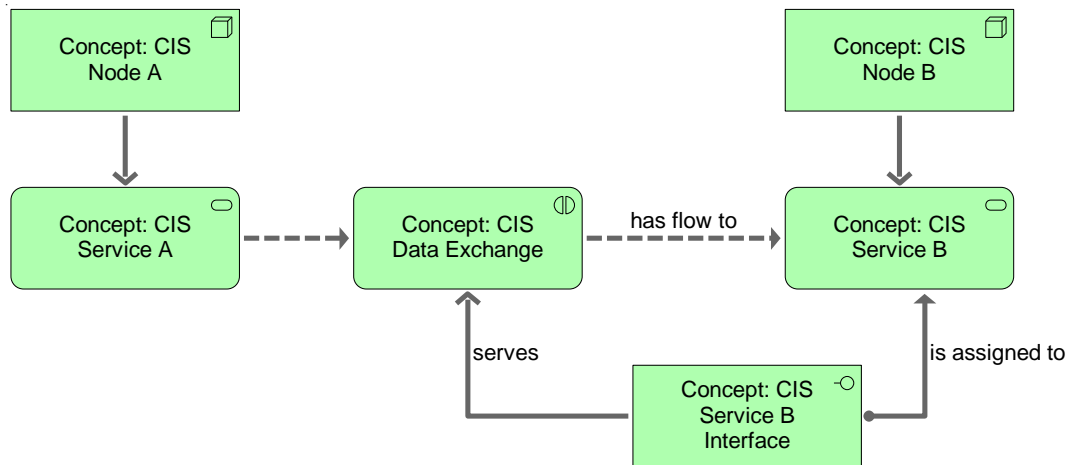


Figure 3 Modelling of data exchange between services and the associated interfaces

0017 The naming convention for Interface IDs is as follows:

0018 Interfaces are named from the perspective of the providing service, as illustrated above. That means that if, for example, the Enterprise Core Service (ECS) implements the interface, and then the interface is defined and named by ECS.

0019 The generic structure of an Interface Name is as follows:

[Network] - [Service] - [Function] - [Logical/Physical] [sequence number]

Example: ON-CS-M-L04

0020 Optional, interfaces may be referred to a specific instance through a suffix.

Example: ON-CS-M-L04-CPS

0021 The "connecting service" suffix (in this example "-CPS") may only be used if it is necessary to refer a specific interface instance, i.e. between a pair of services or systems. When an interface (type) is used to serving multiple subscribers or subscribing services that are "connecting" to the same interface, one must not use the suffix.

0022 For ITM Recovery Increment the network is "ON". The service is an abbreviation of the service and defined in Figure 3 below.

1.1.2. Services Overview

0023 For convenience, the diagram below takes the CIS service tree and summarizes the (technical) CIS services that are relevant for ITM Work Package 7. These CIS services are further linked to the so-called Service Access and Provisioning, identifying the entities that consume and provide services.

0024 The following views will decompose these services as and where considered relevant.

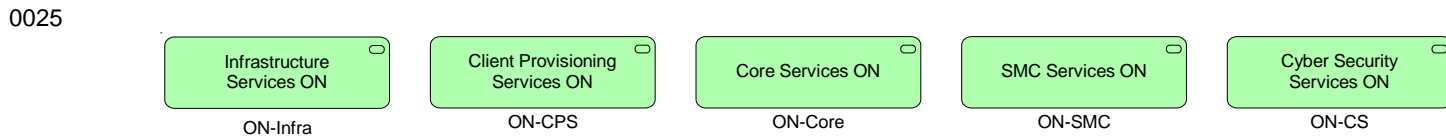


Figure 4 Most relevant technical services in scope this document

1.1.3. Information Exchange Requirements

0026 ITM nodes, across ITM sites, interact with each other, with users and administrators (both modelled as actors) and with external entities. The interactions, or needles, represent a need or requirement to exchange information or communicate. The Section 2 addresses the (technical) exchange between CIS services.

1.1.4. Interfaces

0027 This Service Interfaces View (Figure 5), identifies the high-level services and associated interfaces, as far as relevant for ITM Recovery Increment 1. In this view we aggregate all interfaces per high-level service.

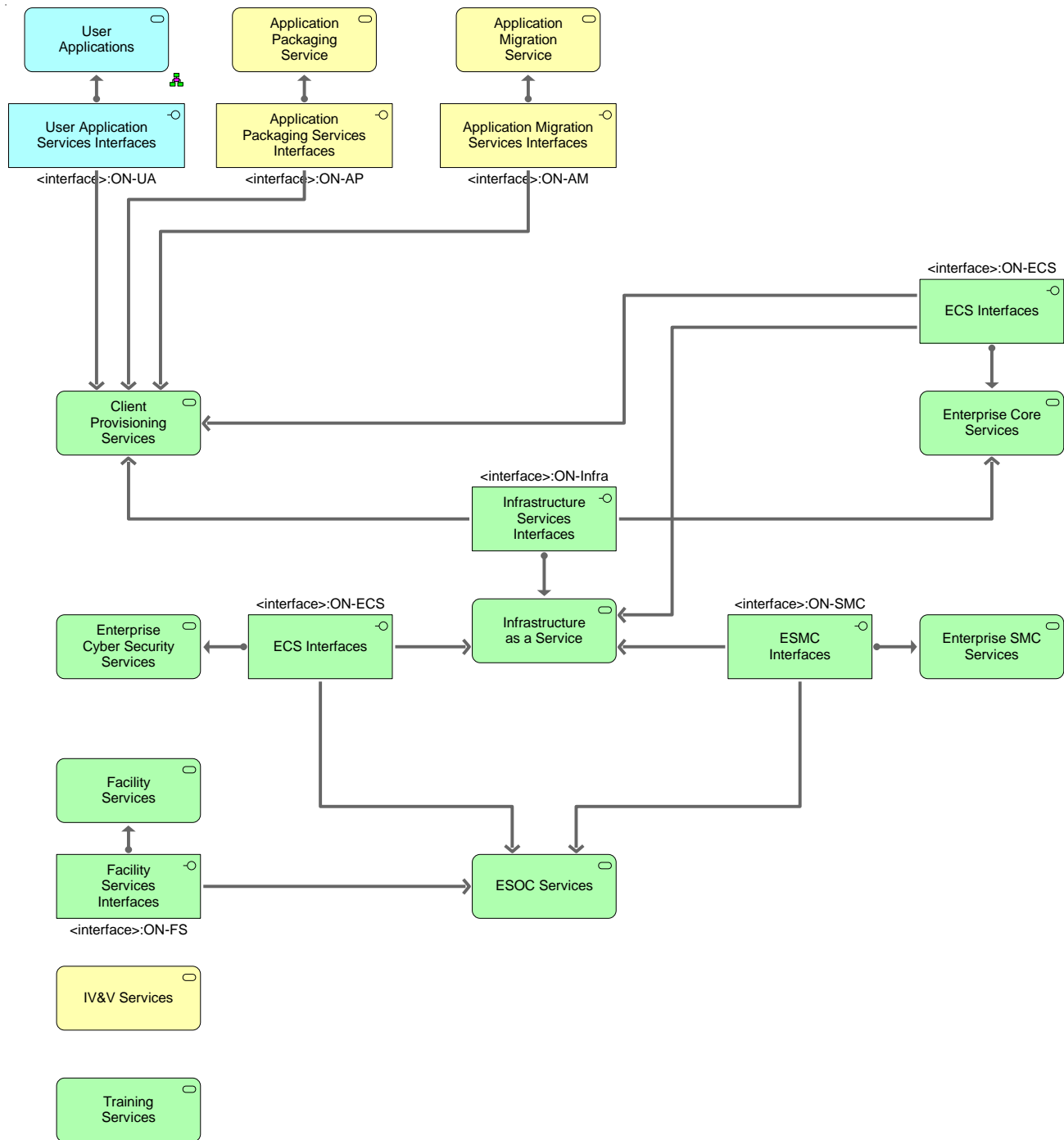


Figure 5 High-level interface view – NAFv4 S3

1.2. Interface Definition Document Table Elements

0028 This paragraph introduces the taxonomy of the so-called Interface Definition Document Table, or interface table for short. The Interface Definition Document Table identifies per service the provided and dependent (subscribing) interfaces.

0029 The Interface Definition Document Table builds on and combines the following concepts:

- (1) Services Overview
- (2) Service Access and Provisioning at ITM sites
- (3) Information Exchange Requirements
- (4) Service Interfaces

0030 These concepts are introduced in the paragraphs 1.1.1- 1.1.4 above.

0031 The interface table identifies:

- a) **Interface ID:** The unique Interface Identifier, using the naming structure as introduced in the IDD Table Model in paragraph 1.1.1.
 - i) The unique interface identifier.
 - ii) Each interface is uniquely named, defined by the providing service and re-used by services that depend on this service by referring to the Interface Instance ID.
- b) **Service Description:** Reference to the service function that this interface relates to.
 - i) Refers to “Concept: CIS Service” and specifically the service function realizing the CIS service.
 - ii) Refers to the (sub) service as introduced in ITM Service Taxonomy and summarized (aggregated) in Figure 3.
- c) **Interface Instance Description:** A high-level reference to the technical exchange between CIS services across a specific interface instance.
 - i) Refers to “Concept: CIS Data Exchange” in Figure 2.
 - ii) The Interface Instance Description is a brief description of the usage of this interface instance.
- d) **Level of Detail¹:** The required level of detail that the SDP and IDD shall provide.
 - i) Guidance to SDP and IDD.
 - ii) Options: High/Low level.
 - iii) Where interfaces are actually well known and well understood industry standard interfaces that require little detailing for a 3rd party to realize in such a way that services that depend on this service can utilise it, the required level of detail is low.
 - iv) If the interface is bespoke, requires NATO specific tailoring or is inadequately standardized or universal, the required level of detail is high.

0032 The interface table is provided in Section 2. Detail is provided in the respective SDP and IDD documents.

1.3. References²

- A. ITM-RC1 ADP
- B. ITM-RC1 SDP IAAS
- C. ITM-RC1 SDP ECS;
- D. ITM-RC1 SDP CPS;
- E. ITM-RC1 SDP SMC;

¹ Not all interface required detail levels are decided at this high level architecture design stage and will be determined later. In those cases the table entries are left empty

² The references listed use Unique ID's that can be found in the SoW Appendix 6 “References and Applicable Documentation”

2. INTERFACE DEFINITION TABLE (IDT)

2.1. NATO Enterprise Services – Provider

	Interface ID	Service Description	Interface Instance Description	Level of Detail (High/Low level)
NATO Enterprise	[NATO Enterprise] NEDS	NATO Enterprise Directory Service	NEDS acts as a broker between various information sources and provides authoritative information.	High
NATO Enterprise	[NATO Enterprise] NSF Public Cloud	NATO Software Factory (NSF) Computer Information System (CIS)	NSF is NCI Agency ‘Development and Integration Environment’, in order to develop and test software based components.	High
NATO Enterprise	[NATO Enterprise] NPKI	NATO Public Key Infrastructure	The NATO PKI manages digital certificates for the NATO Enterprise.	High
NATO Enterprise	[NATO Enterprise] Root DNS	Root Domain Name System Service	Root DNS is the service that supports and maintains the name space for the NATO Enterprise.	High

	Interface ID	Service Description	Interface Instance Description	Level of Detail (High/Low level)
NATO Enterprise	[NATO Enterprise] NCI WAN	NATO Communication Infrastructure WAN	NCI refers to the implementation of the NGCS target architecture and covers a broad range of services ranging from L1 Carrier to Voice and Video services with different security and service levels.	High
NATO Enterprise	[NATO Enterprise] NCI WAN (ON-NCI-DCI)	Data Centre Interconnect	L2 interconnect between DC instances Networking constraints, MTU, transfer delay, capacity	Low
NATO Enterprise	[NATO Enterprise] Trusted Container Registry Service	Master Container Registry Service	All Container Driven Services shall interface to this Master Container Registry Service.	High
NISC SAM Service	[NATO Enterprise] Software Asset Management system (SmartTrack)	SAM Service	Used to import CIs to the CMDB	High

Interface ID	Service Description	Interface Instance Description	Level of Detail (High/Low level)
NATO Enterprise	[NATO Enterprise] Facilities Management System	Patch Manager, Cormant CableSolve, SE DataCentre Expert	Low
NATO Enterprise	[NATO Enterprise] Asset Management	Enterprise Business Application (EBA)	Low
NATO Enterprise	[NATO Enterprise] Configuration Management	NISC Configuration Management	Low

2.2. Enterprise Core Services (ECS) – Provider

Interface ID	Service Description	Interface Instance Description	Level of Detail (High/Low level)
ECS	ON-ECS-Time-L01	Network Time Service Clock synchronization	High

2.3. Enterprise Core Services (ECS) Email Messaging – Provider

Interface ID	Service Description	Interface Instance Description	Level of Detail (High/Low level)
ECS	ON-ECS-Email-L01	Email Transport Handles all SMTP mail flow	High
ECS	ON-ECS-Email-L02	Mailbox Access Provides mailbox access	High

Interface ID		Service Description	Interface Instance Description	Level of Detail (High/Low level)
ECS	ON-ECS-Email-L03	Calendaring Data Services		Low
ECS	ON-ECS-ES-L01-CS	Email (server) Security	Mail Security service on MS Exchange server	High
ECS	ON-ECS-ES-L02-CS	Email DLP	Proofpoint Email Gateway	High

2.4. Enterprise Core Services (ECS) Email Messaging - Consumer

	Interface ID	Service Description	Interface Instance Description	Level of Detail (High/Low level)
ECS	ON-ECS-DIR-L01	Active Directory		High
IaaS	ON-Infra-NETW-L04	IAAS NETWORKING SERVICES, DNS		High
ECS	ON-ECS-SfB-L02	Skype for Business (Presence Services)		High
		Office Online Services	Support office documents online through OWA	High
SMC	ON-SMC-CI-L10	Enterprise CI Discovery and CMDB -> enable the ESMC discovery service to discover Proof Point and its attributes	Proof Point (Gateway)	High
SMC	ON-SMC-CI-L10	Enterprise CI Discovery and CMDB -> enable the ESMC discovery service to discover MS Exchange and its attributes	Microsoft Exchange – Further access beyond the VMs hosting the MS Exchange service to get inside MS Exchange to deep discover mailboxes is required if this information is not provided by MECM (SCCM)	High
CPS	ON-CPS-Mon-L01	Discovery Services SCCM.	Microsoft Exchange Instantiations. Domain and Element SMC	High
ECS	ON-ECS-Mon-L01	Monitoring SCOM		High
SMC	ON-SMC-CI-L09	Enterprise CI Discovery and CMDB -> to enable the importing of CI information managed by Proof Point in to the CMDB.	Proof Point (Gateway) Domain and Element SMC	High
CPS	ON-CPS-SCCM-L02	CMDB SCCM.	Microsoft Exchange Instantiations.	High

	Interface ID	Service Description	Interface Instance Description	Level of Detail (High/Low level)
SMC	ON-SMC-R-L01	Enterprise Request Management -> used to manage and control incidents	Dependent on IDAM (DL, Mailbox creation). [External Users?] Proof point, MS Exchange components	High
SMC	ON-SMC-R-L02	Enterprise Request Management -> used to manage and control Service requests (Request Fulfilment)	Proof point, MS Exchange components	High
SMC	ON-SMC-R-L03	Enterprise Request Management -> used to manage and control requests (Change Management)	Proof point, MS Exchange components	High
SMC	ON-SMC-M-L11	Enterprise Monitoring and Management -> used to receive events and alerts from SCOM. (Direct monitoring by ESMC can be achieved using ON-SMC-M-L12 – local or remote agent based monitoring)	Proof point, MS Exchange components	High
CPS	ON-CPS-SCOM-L02	Reporting SCOM	Email related KPIs.	High
SMC	ON-SMC-Rep-L01	Reporting Enterprise SMC	SLA; Proof point, MS Exchange components	High
ECS	ON-ECS-IDAM-L02	Orchestration and Automation - IDAM		High
IaaS	ON-Infra-Proc-P01	IaaS Processing Services	Physical server	High
IaaS	ON-Infra-Backup-L03	IaaS Backup and Archiving Services	Entire Configuration and identified mailbox information.	High
IaaS	ON-Infra-Stor-L02	IaaS Storage	Physical	High
ECS	ON-ECS-ES-L01-CS	Email (server) Security	Mail Security service on MS Exchange server	High
ECS	ON-ECS-ES-L02-CS	Email DLP	Proofpoint Email Gateway	High

	Interface ID	Service Description	Interface Instance Description	Level of Detail (High/Low level)
CS	ON-CS-GW-L01	Gateway to external CIS	General logical interface for use of the gateway. Needs to be replaced by a sub-interface depending on the actual GW component that is used by 'Email Messaging' in addition to the Proofpoint gateway.	High
CS	ON-CS-DD-L35	Data Diode Service	Data Diode Service Transfer of email. Interface on ON to receive e-mail from a low domain.	Low
CS	ON-CS-EL-L01	Enterprise Logging	Agent Based Log collection	High
CS	ON-CS-EL-L02	Enterprise Logging	Syslog log collection	High
CS	ON-CS-M-L02	Cyber Security Monitoring	Online Vulnerability Assessment	High
CS	ON-CS-M-L03	Cyber Security Monitoring	Online Computer Forensics	High
CPS	ON-CPS-CS-EPS-L02	Endpoint Security	Agent based Endpoint Security for servers	High
CPS	ON-CPS-CS-DLPD-L11	DLP Discovery	Discovery of data on SMB/CIFS file shares.	High
CS	ON-CS-PAM-L01	Privileged Access Management (PAM)	Session Proxy	High
CS	ON-CS-PAM-L05	Privileged Access Management (PAM)	Track & Secure Privileged Accounts	High
CS	ON-NPKI-REG-L01	NPKI Certificate Enrolment Services	Service Initialisation (Mail Server certificate)	Low
CS	ON-NPKI-VAL-L01	NPKI Certificate Validation Services	CRL checking	Low

2.5. Enterprise Core Services (ECS) Skype for Business (SfB) - Provider

	Interface ID	Service Description	Interface Instance Description	Level of Detail (High/Low level)
ECS	ON-ECS-SfB-L01	Skype for Business Instant Messaging (IM)		Low
ECS	ON-ECS-SfB-L02	Skype for Business (Presence Services)		Low
ECS	ON-ECS-SfB-L03	Skype for Business (Peer-to-Peer Communication)		Low
ECS	ON-ECS-SfB-L04	Skype for Business (Audio)		Low
ECS	ON-ECS-SfB-L05	Skype for Business (Video)		Low
ECS	ON-ECS-SfB-L06	Skype for Business (Multi-Conferencing)		Low
ECS	ON-ECS-SfB-L07	Skype for Business (Desktop Sharing)		Low
ECS	ON-ECS-SfB-L08	Skype for Business (White boarding)		Low
ECS	ON-ECS-SfB-L09	Skype for Business (Enterprise Voice (Telephony))		Low
ECS	ON-ECS-SfB-L10	Skype for Business (Remote Access)		Low
ECS	ON-ECS-SfB-L11	Skype for Business (Federation)		Low
CPS	ON-CPS-AppUCC-L01	Outlook Applications		Low

2.6. Enterprise Core Services (ECS) Skype for Business (SfB) – Consumer

	Interface ID	Service Description	Interface Instance Description	Level of Detail (High/Low level)
ECS	ON-ECS-Time-L01	Network Time Service	Clock synchronization	Low
IaaS	ON-Infra-NETW-L04	IaaS Networking services.		Low
IaaS	ON-Infra-NETW-L04	IAAS NETWORKING SERVICES, DNS		High
IaaS	ON-Infra-NETW-L04	Load Balancer		High
IaaS	ON-Infra-Stor-L02	IaaS Storage services.		Low
IaaS	ON-Infra-Proc-P01	IaaS Virtualization Services.	(IaaS processing: this is not virtualisation but P so physical as it appears...this shall be checked with NDWC).	Low
IaaS	ON-Infra-Archive-L05	IaaS Archiving Services	Database Services Archiving	High
IaaS	ON-Infra-Backup-L03	IaaS Backup Services		High
CPS	TBD	MECM	Windows patching services.	High
SMC	ON-SMC-CI-L10	Enterprise CI Discovery and CMDB -> used to discover service CIs and attributes	It is expected that ESMC will discovery Skype for Business utilising access to the VMs on which Skype service components are installed.	High
SMC	ON-SMC-R-L01	Enterprise Request Management -> Incidents – used to enable the creation of incidents for the Skype for Business service and its components		High
SMC	ON-SMC-R-L02	Enterprise Request Management -> Request Fulfilment – used to enable the creation of service requests for new, or modifications to, Skype for Business		High

	Interface ID	Service Description	Interface Instance Description	Level of Detail (High/Low level)
SMC	ON-SMC-R-L03	Enterprise Request Management -> Change Management – used to enable the creation of Change requests for new, or modifications to, Skype for Business		High
SMC	ON-SMC-M-L11	Enterprise Monitoring and Management -> used to receive events and alerts from SCOM. (Direct monitoring by ESMC can be achieved using ON-SMC-M-L12 – local or remote agent based monitoring)		High
ECS	TBD	Office Online Server (OOS)	PowerPoint sharing features	High
ECS	ON-ECS-DIR-L01	AD	Active Directory	High
ECS	ON-ECS-DIR-L03	DFS File Sharing		High
	TBD	ADFS Proxy	DMZ	High
	TBD	Reverse Proxy		High
ECS	ON-ECS-Email-L01	Exchange Services		High
ECS	ON-ECS-DB-L01	Database Services (Front End)		High
CS	ON-CS-GW-L01	Gateway to external CIS	General logical interface for use of the gateway. Needs to be replaced by a sub-interface depending on the actual GW component that is used by 'Skype for Business'; firewall at a minimum	High
CS	ON-CS-EL-L01	Enterprise Logging	Agent Based Log collection	High
CS	ON-CS-EL-L02	Enterprise Logging	Syslog log collection	Low
CS	ON-CS-M-L02	Cyber Security Monitoring	Online Vulnerability Assessment	High
CS	ON-CS-M-L03	Cyber Security Monitoring	Online Computer Forensics	High
CPS	ON-CPS-CS-EPS-L02	Endpoint Security	Agent based Endpoint Security for servers	Low
CPS	ON-CPS-CS-DLPD-L11	DLP Discovery	Discovery of data on SMB/CIFS file shares.	High

Interface ID		Service Description	Interface Instance Description	Level of Detail (High/Low level)
CS	ON-CS-PAM-L01	Privileged Access Management (PAM)	Session Proxy	High
CS	ON-CS-PAM-L05	Privileged Access Management (PAM)	Track & Secure Privileged Accounts	High
CS	ON-NPKI-REG-L01	NPKI Certificate Enrolment Services	Service Initialisation (Skype for Business Server certificate).	Low
CS	ON-NPKI-VAL-L01	NPKI Certificate Validation Services	CRL checking	Low

2.7. Enterprise Core Services (ECS) Portal Services - Provider

Interface ID	Service Description	Interface Instance Description	Level of Detail (High/Low level)
ECS	ON-ECS-Web-L01	Web Hosting PLT003 Web Hosting Service Microsoft SharePoint Server, with components of: - Office Online Server - Microsoft Workflow Manager Consumers of PLT003 Web Hosting Service can be found in the APMPs: NS APMP A6335 SharePoint Server CENTRAL Unit of Provision is based on data size. The flavour is dedicated and shared.	Low The installation /configuration of Web Hosting will be overseen by an Agency engineer at all times.
ECS	ON-ECS-Web-L02	Web Hosting Internet Information Service (IIS) EFF: E-Forum Factory (NCIA Website) Performance Management K2 Workflow Service	Low
ECS	ON-ECS-Web-L03	Web Hosting Apache Tomcat Consumers of Web Hosting Apache Tomcat: - ITSM	Low
ECS	ON-ECS-Web-L04	Web Hosting Oracle Web Logic Oracle Web Logic requires a Dedicated Farm. Consumers of Web Hosting Oracle Web Logic are: - APP090 – Enterprise BI and Data Warehouse Service - NNCS	Low

2.8. Enterprise Core Services (ECS) Portal Services - Consumer

	Interface ID	Service Description	Interface Instance Description	Level of Detail (High/Low level)
ECS	ON-ECS-Time-L01	Network Time Service	Clock synchronization	
IaaS	ON-Infra-Proc-L01	IaaS Processing Services		The servers of Web Hosting platforms require disk space on C/D/E drives for installation/configuration purposes
IaaS	ON-Infra-NETW-L04	IaaS Networking – Load Balancer	Network performance and capacity required	High
ECS	ON-ECS-DIR-L02	Active Directory and Federation Service	User Federation & authentication	High
	ON-ECS-DB-L01	Database Platform Service		High
CPS	TBD	Patching	Through MECM (under CPS)	
SMC	ON-SMC-CI-L10	Enterprise CI Discovery and CMDB - > Discovery - used to discover service CIs and related attributes	It is expected that Portal Services components will be discovered utilising the interface to the underlying VMs. It may be required to perform deep discovery inside the application to better link SharePoint sites and assets to the overall service model provided this information not be imported (to the CMDB via ON-SMC-CI-L09) from MECM (SCCM) or possibly SCOM	High

Interface ID		Service Description	Interface Instance Description	Level of Detail (High/Low level)
SMC	ON-SMC-M-L11	Enterprise Monitoring and Management -> used to receive events and alerts from SCOM. (Direct monitoring by ESMC can be achieved using ON-SMC-M-L12 – local or remote agent based monitoring)	Partial SCOM What are the options to have SQL monitoring? (Need to have TDA topic between WP11/ESMC and WP7)	High
SMC	ON-SMC-R-L01	Enterprise Request Management -> Incidents – used to enable the creation of incidents for the Portal Services and its components	It is expected that via SCOM and/or Enterprise Monitoring and Management components, incident tickets will be automatically generated when specific monitoring criteria have been met. Users and ESOC will also be able to manually raise incidents against Portal services.	High
SMC	ON-SMC-R-L02	Enterprise Request Management -> Request Fulfilment – used to enable the creation of service requests for new, or modifications to, Portal Services		High
SMC	ON-SMC-R-L03	Enterprise Request Management -> Change Management – used to enable the creation of Change requests for new, or modifications to, Portal Services		High

	Interface ID	Service Description	Interface Instance Description	Level of Detail (High/Low level)
CS	ON-CS-GW-L01	Gateway to external CIS	General logical interface for use of the gateway. Needs to be replaced by a sub-interface depending on the actual GW component that is used by 'Portal Services'; general firewall and Web Application Firewall.	High
CS	ON-CS-EL-L01	Enterprise Logging	Agent Based Log collection	High
CS	ON-CS-EL-L02	Enterprise Logging	Syslog log collection	Low
CS	ON-CS-M-L02	Cyber Security Monitoring	Online Vulnerability Assessment	High
CS	ON-CS-M-L03	Cyber Security Monitoring	Online Computer Forensics	High
CPS	ON-CPS-CS-EPS-L02	Endpoint Security	Agent based Endpoint Security for servers	Low
CPS	ON-CPS-CS-EPS-L20	Endpoint Security	Agent based Endpoint Security for SharePoint Servers	Low
CPS	ON-CPS-CS-DLPD-L11	DLP Discovery	Discovery of data on SMB/CIFS file shares.	High
CPS	ON-CPS-CS-DLPD-L13	DLP Discovery	Discovery of data on SharePoint portals.	High
ECS	ON-ECS-CS-WAF-L01	Web Application Firewall (WAF)	WAF proxy	Low
CS	ON-CS-PAM-L01	Privileged Access Management (PAM)	Session Proxy	High
CS	ON-CS-PAM-L05	Privileged Access Management (PAM)	Track & Secure Privileged Accounts	High
CS	ON-NPKI-REG-L01	NPKI Certificate Enrolment Services	Service Initialisation (Web/SharePoint Server certificate)	Low
CS	ON-NPKI-VAL-L01	NPKI Certificate Validation Services	CRL checking	Low
CPS	ON-CPS-TFC-L01	Titus File Classification	Titus Classification for Microsoft Office	Low

2.9. Enterprise Core Services (ECS) Database Services - Provider

	Interface ID	Service Description	Interface Instance Description	Level of Detail (High/Low level)
ECS	ON-ECS-DB-L01	RDBMS	MS SQL service. PLT006 This will migrate to ON-PaaS-DB (Consumers of MS SQL: - SCOM - SCCM - Skype - Exchange? - SharePoint - EPO McAfee - TITUS - Printing)	Low (HA + sec ref avail)
ECS	ON-ECS-DB-L02	RDBMS	Oracle DB service segregated server farm. PLT006 <u>Not used for WP7 realized services</u>	Low (HA + sec ref avail)
ECS	ON-ECS-DB-L03	RDBMS	Postgress PLT006 <u>Not used for WP7 realized services</u>	Low (HA + sec ref avail)
ECS	ON-ECS-DB-L04	RDBMS	MySQL PLT006 <u>Not used for WP7 realized services</u>	Low (HA + sec ref avail)

2.10. Enterprise Core Services (ECS) Database Services - Consumer

	Interface ID	Service Description	Interface Instance Description	Level of Detail (High/Low level)
IaaS	ON-Infra-Proc-L01	IaaS Processing	Must be configured on dedicated HW segment driven by licensing (selection of right IaaS HW server type shall be coordinated)	High

Interface ID		Service Description	Interface Instance Description	Level of Detail (High/Low level)
IaaS	ON-Infra-Stor-L02	IaaS Storage	Must be configured with dedicated HW LUN, with adequate IOPS performance	High
IaaS	ON-Infra- NETW-L04	IaaS Networking	Network performance, capacity and QoS required	High
IaaS	ON-Infra-Backup-L03	Backup	Compatible with RDBMS	High
IaaS	ON-Infra-Archive-L05	Archiving	Archive of DB content	High
ECS	ON-ECS-DIR-L01	AD	MS level admin Service / device accounts	High
CPS	TBD	Patching	Through MECM (under CPS)	High
SMC	ON-SMC-CI-L10	Enterprise CI Discovery and CMDB - > Discovery - used to discover service CIs and related attributes	It is expected that Database Services components will be discovered utilising the interface to the underlying VMs. It may be required to perform deep discovery inside the database instances to better link CIs to the overall service model, provided this information not be imported (to the CMDB via ON-SMC-CI-L09) from MECM (SCCM).	High
SMC	ON-SMC-M-L11	Enterprise Monitoring and Management -> used to receive events and alerts from SCOM. (Direct monitoring by ESMC can be achieved using ON-SMC-M-L12 – local or remote agent based monitoring, for example, to monitor non-Microsoft based database services)	Partial SCOM What are the options to have SQL monitoring? (Need to have TDA topic between WP11/ESMC and WP7)	High

Interface ID	Service Description	Interface Instance Description	Level of Detail (High/Low level)
SMC	ON-SMC-R-L01	Enterprise Request Management -> Incidents – used to enable the creation of incidents for the Database Services and its components	High
SMC	ON-SMC-R-L02	Enterprise Request Management -> Request Fulfilment – used to enable the creation of service requests for new, or modifications to, Database Services	High
SMC	ON-SMC-R-L03	Enterprise Request Management -> Change Management – used to enable the creation of Change requests for new, or modifications to, Database Services	High
CS	ON-CS-GW-L01	Gateway to external CIS	General logical interface for use of the gateway. Needs to be replaced by a sub-interface depending on the actual GW component that is used by ‘Database Services’; firewall at a minimum
CS	ON-CS-DD-L33	Data Diode Service	Data Diode Service Transfer of data over TCP. Receive database mirroring traffic from REACH.
CS	ON-CS-EL-L01	Enterprise Logging	Agent Based Log collection
CS	ON-CS-EL-L02	Enterprise Logging	Syslog log collection
CS	ON-CS-M-L02	Cyber Security Monitoring	Online Vulnerability Assessment
CS	ON-CS-M-L03	Cyber Security Monitoring	Online Computer Forensics
CPS	ON-CPS-CS-EPS-L02	Endpoint Security	Agent based Endpoint Security for servers

Interface ID		Service Description	Interface Instance Description	Level of Detail (High/Low level)
CPS	ON-CPS-CS-DLPD-L11	DLP Discovery	Discovery of data on SMB/CIFS file shares.	High
CPS	ON-CPS-CS-DLPD-L12	DLP Discovery	Discovery of data on database servers.	High
CS	ON-CS-PAM-L01	Privileged Access Management (PAM)	Session Proxy	High
CS	ON-CS-PAM-L05	Privileged Access Management (PAM)	Track & Secure Privileged Accounts	High
CS	ON-NPKI-REG-L01	NPKI Certificate Enrolment Services	Service Initialisation (Database Server certificate)	Low
CS	ON-NPKI-VAL-L01	NPKI Certificate Validation Services	CRL checking	Low

2.11. Enterprise Core Services (ECS) Directory Services - Provider

Interface ID		Service Description	Interface Instance Description	Level of Detail (High/Low level)
ECS	ON-ECS-DIR-L01	Active Directory	Provides services to support user authentication and authorization, as well support directory-integrated applications.	High
ECS	ON-ECS-DIR-L02	Active Directory Federation Services	Provides services to support federation with external partners, and to support NPKI-based authentication and authorisation within each enclave.	High
ECS	ON-ECS-DIR-L03	Distributed File System (DFS)	Provides services to support high availability file sharing between sites, single domain based namespaces, and file replication for certain core services.	High

	Interface ID	Service Description	Interface Instance Description	Level of Detail (High/Low level)
ECS	ON-ECS-DIR-L04	Microsoft Identity Manager (MIM)	Microsoft Identity Manager (MIM) simplifies and secures identity and access management (IDAM) with automated workflows, business rules, and easy integration with heterogeneous platforms across the datacentre and externally.	High
ECS	ON-ECS-DIR-L05	The domain name system (DNS)	The domain name system (DNS) provides and maintains domain names and translates them into Internet Protocol (IP) addresses.	High
ECS	ON-ECS-DIR-L06	Network Time Protocol (NTP)	Network Time Protocol (NTP) synchronizes with computer clock time sources in the ON.	High
ECS	ON-ECS-IDAM-L02	Orchestration and Automation - IDAM	Orchestration and Automation - IDAM	High

2.12. Enterprise Core Services (ECS) Directory Services - Consumer

	Interface ID	Service Description	Interface Instance Description	Level of Detail (High/Low level)
SMC	ON-SMC-CI-L10	Enterprise CI Discovery and CMDB - > Discovery - used to discover service CIs and related attributes	It is expected that Directory Services components will be discovered utilising the interface to the underlying VMs.	High

Interface ID		Service Description	Interface Instance Description	Level of Detail (High/Low level)
SMC	ON-SMC-M-L11	Enterprise Monitoring and Management -> used to receive events and alerts from SCOM. (Direct monitoring by ESMC can be achieved using ON-SMC-M-L12 – local or remote agent based monitoring)	The automatic creation of incidents for Directory Service Components will be performed by either by SCOM or Enterprise Monitoring and Management based on well-defined criteria. Detailed technical discussion need to be had between WP11 SMEs and WP07 to finalise the topic of automatic incident creation based on monitoring.	High
SMC	ON-SMC-R-L01	Enterprise Request Management -> Incidents – used to enable the creation of incidents for the Directory Services and its components		High
SMC	ON-SMC-R-L02	Enterprise Request Management -> Request Fulfilment – used to enable the creation of service requests for new, or modifications to, Directory Services		High
SMC	ON-SMC-R-L03	Enterprise Request Management -> Change Management – used to enable the creation of Change requests for new, or modifications to, Directory Services		High
CS	ON-CS-GW-L01	Gateway to external CIS	General logical interface for use of the gateway. Needs to be replaced by a sub-interface depending on the actual GW component that is used by ‘Directory Services’.	High

Interface ID		Service Description	Interface Instance Description	Level of Detail (High/Low level)
CS	ON-CS-EL-L01	Enterprise Logging	Agent Based Log collection	High
CS	ON-CS-EL-L02	Enterprise Logging	Syslog log collection	Low
CS	ON-CS-M-L02	Cyber Security Monitoring	Online Vulnerability Assessment	High
CS	ON-CS-M-L03	Cyber Security Monitoring	Online Computer Forensics	High
CPS	ON-CPS-CS-EPS-L02	Endpoint Security	Agent based Endpoint Security for servers	Low
CPS	ON-CPS-CS-DLPD-L11	DLP Discovery	Discovery of data on SMB/CIFS file shares.	High
CS	ON-CS-PAM-L01	Privileged Access Management (PAM)	Session Proxy	High
CS	ON-CS-PAM-L05	Privileged Access Management (PAM)	Track & Secure Privileged Accounts	High
CS	ON-CS-UDC-L01	User and Device Credentials	Identity data retrieval	High
CS	ON-NPKI-REG-L01	NPKI Certificate Enrolment Services	Service Initialisation (Directory Server certificate)	Low
CS	ON-NPKI-VAL-L01	NPKI Certificate Validation Services	CRL checking	Low
ECS	[NATO Enterprise] NEDS	NEDS NATO Enterprise Directory Service	Consumed by MIM that manages directory object provisioning based on business policy, and implements workflow-driven provisioning.	High
CS	ON-CS-PAM-L01	Privileged Access Management (PAM)	Session Proxy: Facilitates privileged access request between requestors (human/non-human) and target systems.	High
CS	ON-CS-PAM-L05	Privileged Access Management (PAM)	Track & Secure Privileged Accounts: Facilitates the tracking & securing of privileged accounts of target systems, also called discovery scans.	High

2.13. Enterprise Core Services (ECS) Domain SMC Services - Provider

	Interface ID	Service Description	Interface Instance Description	Level of Detail (High/Low level)
ECS	ON-ECS-Mon-L01	Monitor the servers (alive, availability, capacity management-forecasting)	Domain and Element SMC	High

2.14. Enterprise Core Services Cyber Security Services – Provider

	Interface ID	Service Description	Interface Instance Description	Level of Detail (High/Low level)
ECS	ON-ECS-CS-ES-L01	Email (server) Security	Mail Security service on MS Exchange server	Low
ECS	ON-ECS-CS-ES-L02	Email DLP	Proofpoint Email Gateway	Low
ECS	ON-ECS-CS-WAF-L01	Web Application Firewall (WAF)	WAF proxy	Low

2.15. Enterprise Core Services Cyber Security Services – Consumer

	Interface ID	Service Description	Interface Instance Description	Level of Detail (High/Low level)
CPS	ON-CPS-TMC-L01	Titus Message Classification	Plugin for Outlook to enable labelling of email.	Low
CPS	ON-CPS-TMC-L02	Titus Message Classification	Plugin for Outlook Web Access to enable labelling of email.	Low
CPS	ON-CPS-TFC-L01	Titus File Classification	Titus Classification for Microsoft Office	Low
CPS	ON-CPS-TFC-L02	Titus File Classification	Titus Classification for Desktop	Low

2.16. Client Provisioning Services (CPS) Desktop Provisioning - Provider

	Interface ID	Service Description	Interface Instance Description	Level of Detail (High/Low level)
CPS	ON-CPS-Desktop-L01	CPS Desktop Service		Low
CPS	ON-CPS-ThinClient-L01	Thin Client	CPS Infra	Low

2.17. Client Provisioning Services (CPS) Desktop Provisioning - Consumer

	Interface ID	Service Description	Interface Instance Description	Level of Detail (High/Low level)
CPS	ON-CPS-InfraWS-P01	Client Hardware (FAT)		Low
	ON-ILS-InfraWS-P01	Client Hardware (Thin)	Hardware as a Service. Accessories smart card reader included?	Low
IaaS	ON-Infra-Stor-L02		VDI backend	Low
IaaS	ON-Infra-Backup-L03		VDI Management part	High
IaaS	ON-Infra-NETW-L04	IPAM Service		High
Campus LAN	ON-CampusLAN-Access-L01	Campus LAN		High
IaaS	ON-Infra-NETW-L04	IAAS NETWORKING SERVICES, DNS		High
IaaS	ON-Infra-Proc-P01		VDI compute , physical	High
IaaS	ON-Infra-Proc-L01		VDI compute, virtualized	High
ECS	ON-ECS-DIR-L01	Active Directory		High
	TBD	Desktop Patching		High
	TBD	Hardware Patching		High
	TBD	Thin Client Patching		High
CS	ON-CS-EL-L01	Enterprise Logging	Agent Based Log collection	High
CS	ON-CS-EL-L02	Enterprise Logging	Syslog log collection	Low
CS	ON-CS-M-L02	Cyber Security Monitoring	Online Vulnerability Assessment	High
CS	ON-CS-M-L03	Cyber Security Monitoring	Online Computer Forensics	High

Interface ID		Service Description	Interface Instance Description	Level of Detail (High/Low level)
CPS	ON-CPS-CS-EPS-L01	Endpoint Security	Agent based Endpoint Security for clients	Low
CPS	ON-CPS-CS-DLPD-L01	DLP Discovery	Discovery of data on client file system.	High
CS	ON-CS-PAM-L04	Privileged Access Management (PAM)	Client-based agents required for system administrator desktop	High
CS	ON-NPKI-REG-L01	NPKI Certificate Enrolment Services	Device certificate issuance (Automated certificate enrolment to be used).	Low
CS	ON-NPKI-VAL-L01	NPKI Certificate Validation Services	CRL checking	Low
SMC	ON-SMC-CI-L09	Enterprise CI Discovery and CMDB – used to provide the central CMDB with CIs and related attributes maintained in Horizon and Wyse Management Suite	Horizon and Wyse Management Suit	High
SMC	ON-SMC-CI-L09	Enterprise CI Discovery and CMDB – used to provide the central CMDB with CIs and related attributes maintained in MECM (SCCM)	MECM	High

Interface ID		Service Description	Interface Instance Description	Level of Detail (High/Low level)
SMC	ON-SMC-CI-L10	Enterprise CI Discovery and CMDB -> Discovery – used to discover the service CIs and related attributes	It is expected that Desktop Provisioning elements and related CIs will mostly be discovered utilising access to the underlying VMs. In instances where the service components are appliances (HW or SW), specific permission may need to be granted to the Enterprise CI Discovery and CMDB discovery component to enable deep discovery. This discovered data compliments the data imported from DSMS components when aggregated in the central CMDB.	High
CPS	ON-CPS-Mon-L01	Monitoring SCOM	SCOM Services	High
SMC	ON-SMC-M-L11	Enterprise Monitoring and Management -> used to receive events and alerts from SCOM and vROPS. (Direct monitoring by ESMC can be achieved using ON-SMC-M-L12 – local or remote agent based monitoring)	The automatic creation of incidents for Desktop Provisioning Components will be performed either by SCOM, vRops, and/or Enterprise Monitoring and Management based on well-defined criteria. Detailed technical discussion need to be had between WP11 SMEs and WP07 to finalise the topic of automatic incident creation based on monitoring.	High

Interface ID		Service Description	Interface Instance Description	Level of Detail (High/Low level)
SMC	ON-SMC-R-L01	Enterprise Request Management -> Incidents – used to enable the creation of incidents for Desktop provisioning and its components		High
SMC	ON-SMC-R-L02	Enterprise Request Management -> Request Fulfilment – used to enable the creation of service requests for new, or modifications to, Desktop Provisioning	Any defined automation (or group of automations requiring orchestration) that enable the automatic provisioning of Desktop Provisioning service instances (or modifications to existing instances) can be interfaced with Enterprise Request Management to provide governance, and triggering; Furthermore, such automation can be interfaced with Enterprise SMC Orchestration and Automation Service to enable multi-system orchestration where required.	High

Interface ID	Service Description	Interface Instance Description	Level of Detail (High/Low level)
SMC	ON-SMC-R-L03	Enterprise Request Management -> Change Management – used to enable the creation of Change requests for new, or modifications to, Desktop Provisioning	Any defined automation (or group of automations requiring orchestration) that enable the automatic provisioning of Desktop Provisioning service instances (or modifications to existing instances) can be interfaced with Enterprise Request Management to provide governance, and triggering; Furthermore, such automation can be interfaced with Enterprise SMC Orchestration and Automation Service to enable multi-system orchestration where required.

2.18. Client Provisioning Services (CPS) Application Provisioning - Provider

Interface ID	Service Description	Interface Instance Description	Level of Detail (High/Low level)
CPS	ON-CPS-AppDelivery-L01	Application Delivery in packages (MSIX) through MECM and VMware App volumes.	High
CPS	ON-CPS-AppDelivery-L02	RDSH service through Microsoft Remote Desktop Services	High

2.19. Client Provisioning Services (CPS) Application Provisioning - Consumer

	Interface ID	Service Description	Interface Instance Description	Level of Detail (High/Low level)
Appl Packaging Services	ON-ECS-PCKG-L1	Application Packaging Service		High
ECS	ON-ECS-DIR-L01	Directory Service (AD)	Provide by Enterprise Core Services (ECS).	High
IaaS	ON-Infra-Proc-L01	IaaS Processing Services		High
IaaS	ON-Infra-Proc-P01	IaaS Processing, dedicated	Dedicated cluster or hardware required, typically for licenses purposes (vCPU cores)	High
IaaS	ON-Infra-Stor-L02			High
IaaS	ON-Infra-NETW-L04			High
IaaS	ON-Infra-Backup-L03			High
ECS	ON-ECS-DB-L01	Database services (ECS-SQL)		High
Campus LAN	ON-CampusLAN-Access-L01	Campus LAN		High
	TBD	Repository Service		High
SMC	ON-SMC-CI-L09	Enterprise CI Discovery and CMDB → CMDB – used to enable the creation/updating of CIs and related data managed inside (internal databases and/or repositories) Application Provisioning components		High

Interface ID		Service Description	Interface Instance Description	Level of Detail (High/Low level)
SMC	ON-SMC-CI-L10	Enterprise CI Discovery and CMDB -> Discovery – used to discover the service CIs and related attributes	It is expected that Application Provisioning elements and related CIs will mostly be discovered utilising access to the underlying VMs. In instances where the service components are appliances (HW or SW), specific permission may need to be granted to the Enterprise CI Discovery and CMDB discovery component to enable deep discovery. This discovered data compliments the data imported from DSMS components when aggregated in the central CMDB.	High
SMC	ON-SMC-M-L11	Enterprise Monitoring and Management -> used to receive events and alerts from SCOM and vROPS. (Direct monitoring by ESMC can be achieved using ON-SMC-M-L12 – local or remote agent based monitoring)	The automatic creation of incidents for Application Provisioning components will be performed either by SCOM, vRops, and/or Enterprise Monitoring and Management based on well-defined criteria. Detailed technical discussion need to be had between WP11 SMEs and WP07 to finalise the topic of automatic incident creation based on monitoring.	High

Interface ID		Service Description	Interface Instance Description	Level of Detail (High/Low level)
SMC	ON-SMC-R-L01	Enterprise Request Management -> Incidents – used to enable the creation of incidents for Application Provisioning and its components		High
SMC	ON-SMC-R-L02	Enterprise Request Management -> Request Fulfilment – used to enable the creation of service requests for new, or modifications to, Application Provisioning	Any defined automation (or group of automations requiring orchestration) that enable the automatic provisioning of applications can be interfaced with Enterprise Request Management to provide governance, and triggering.	High
SMC	ON-SMC-R-L03	Enterprise Request Management -> Change Management – used to enable the creation of Change requests for new, or modifications to, Application Provisioning	Any defined automation (or group of automations requiring orchestration) that enable the automatic provisioning of Application Provisioning service instances (or modifications to existing instances) can be interfaced with Enterprise Request Management to provide governance, and triggering; Furthermore, such automation can be interfaced with Enterprise SMC Orchestration and Automation Service to enable multi-system orchestration where required.	High

	Interface ID	Service Description	Interface Instance Description	Level of Detail (High/Low level)
SMC	ON-SMC-R-L05	Enterprise Request Management -> Release Management – used to enable the creation and modification of Release records in support of Application Provisioning		High
SMC	ON-SMC-DML-L13	Electronic DML -> used to enable the creation or modification of entries in the DML artefact repository	This interface should utilise a standard network file share (e.g. CIFS, NFS) A discussion with WP11, TDA, and WP09.1/2 regarding how (technically) application provisioning will utilise the DML needs to occur.	High
SMC	ON-SMC-DML-L14	Electronic DML -> eDML client – used to enable the secure downloading of contents within the DML by external services or users	This interface will provide a more controlled approach to access and reading the eDML contents. A discussion with WP11, TDA, and WP09.1/2 regarding how (technically) application provisioning will utilise the DML needs to occur.	High
CS	ON-CS-PAM-L01	Privileged Access Management (PAM)	Session Proxy	High
CS	ON-CS-PAM-L05	Privileged Access Management (PAM)	Track & Secure Privileged Accounts	High
CS	ON-CS-UDC-L08	User and Device Credentials	Service Initialisation (RDSH Server certificate)	High
CS	ON-NPKI-REG-L01	NPKI Certificate Enrolment Services	Service Initialisation (MECM and VMWare App Volumes certificates and RDSH, if applicable)	Low
CS	ON-NPKI-VAL-L01	NPKI Certificate Validation Services	CRL checking/ NPKI Directory Services	Low

2.20. Client Provisioning Services (CPS) Domain SMC - Provider

	Interface ID	Service Description	Interface Instance Description	Level of Detail (High/Low level)
CPS	ON-CPS-Mon-L01	Monitor the servers (alive, availability, capacity management-forecasting)	Domain and Element SMC	High
CPS	ON-CPS-SCCM-L02	CMDB SCCM	Microsoft Exchange Instantiations	High
CPS	ON-CPS-SCOM-L02	Reporting SCOM	Email related KPIs	High

2.21. Client Provisioning Services (CPS) Domain SMC - Consumer

	Interface ID	Service Description	Interface Instance Description	Level of Detail (High/Low level)
SMC	ON-SMC-Mon-L01	Interface with SMC		High
IaaS	ON-Infra-PL01	ON-Infra-PL01	Explain physical and logical	High
IaaS	ON-Infra-Stor-L02	ON-Infra-Stor-L02		High
IaaS	ON-Infra-NETW-L04	ON-Infra-NETW-L04		High
IaaS	ON-Infra-Backup-L03	ON-Infra-Backup-L03		High
ECS	ON-ECS-DB-L01	Database services (ECS-SQL)		High
SMC	ON-SMC-CI-L09	Enterprise CI Discovery and CMDB → CMDB – used to enable the creation/updating of CIs and related data managed inside (internal databases and/or repositories) SCOM	Consumption of this interface will be required if this service is instead to be the Client Provisioning Domain SMC Services as opposed to only SCOM	High

Interface ID	Service Description	Interface Instance Description	Level of Detail (High/Low level)	
SMC	ON-SMC-M-L11	Enterprise Monitoring and Management -> used to receive events and alerts from SCOM. (Direct monitoring by ESMC can be achieved using ON-SMC-M-L12 – local or remote agent based monitoring)	The automatic creation of incidents for this service will be performed either by SCOM and/or Enterprise Monitoring and Management based on well-defined criteria. Detailed technical discussion need to be had between WP11 SMEs and WP07 to finalise the topic of automatic incident creation based on monitoring.	High
SMC	ON-SMC-R-L01	Enterprise Request Management -> Incidents – used to enable the creation of incidents for SCOM		High
SMC	ON-SMC-R-L02	Enterprise Request Management -> Request Fulfilment – used to enable the creation of service requests for new, or modifications to, SCOM	Any defined automation (or group of automations requiring orchestration) that enable the automatic provisioning of applications can be interfaced with Enterprise Request Management to provide governance, and triggering.	High

Interface ID	Service Description	Interface Instance Description	Level of Detail (High/Low level)
SMC	ON-SMC-R-L03	Enterprise Request Management -> Change Management – used to enable the creation of Change requests for new, or modifications to, SCOM	Any defined automation (or group of automations requiring orchestration) that enable the automatic provisioning of SCOM service instances (or modifications to existing instances) can be interfaced with Enterprise Request Management to provide governance, and triggering; Furthermore, such automation can be interfaced with Enterprise SMC Orchestration and Automation Service to enable multi-system orchestration where required.

2.22. Client Provisioning Cyber Security Services - Provider

Interface ID	Service Description	Interface Instance Description	Level of Detail (High/Low level)
CPS	ON-CPS-CS-EPS-L01	Endpoint Security	Agent based Endpoint Security for clients
CPS	ON-CPS-CS-EPS-L02	Endpoint Security	Agent based Endpoint Security for servers
CPS	ON-CPS-CS-EPS-L20	Endpoint Security	Agent based Endpoint Security for SharePoint Servers
CPS	ON-CPS-CS-DLPD-L01	DLP Discovery	Discovery of data on client file system.
CPS	ON-CPS-CS-DLPD-L11	DLP Discovery	Discovery of data on SMB/CIFS file shares
CPS	ON-CPS-CS-DLPD-L12	DLP Discovery	Discovery of data on database servers

	Interface ID	Service Description	Interface Instance Description	Level of Detail (High/Low level)
CPS	ON-CPS-CS-DLPD-L13	DLP Discovery	Discovery of data on SharePoint portals	High
CPS	ON-CPS-TFC-L01	Titus File Classification	Titus Classification for Microsoft Office	High

2.23. Client Provisioning Cyber Security Services – Consumer

	Interface ID	Service Description	Interface Instance Description	Level of Detail (High/Low level)
CPS	ON-CPS-TMC-L01	Titus Message Classification	Plugin for Outlook to enable labelling of email.	Low
CPS	ON-CPS-TMC-L02	Titus Message Classification	Plugin for Outlook Web Access to enable labelling of email.	Low
CPS	ON-CPS-TFC-L01	Titus File Classification	Titus Classification for Microsoft Office	Low
CPS	ON-CPS-TFC-L02	Titus File Classification	Titus Classification for Desktop	Low

2.24. Client Provisioning Services (CPS) Campus LAN Services - Consumer

	Interface ID	Service Description	Interface Instance Description	Level of Detail (High/Low level)
SMC	ON-SMC-CI-L09 <i>Request direction:</i> <i>ESMC → CPS</i> <i>Data flow direction:</i> <i>ESMC ← CPS</i>	Enterprise CI Discovery and CMDB → CMDB – used to enable the creation/updating of CIs and related data managed inside (internal databases and/or repositories) Campus LAN service components	This interface is intended to enable the ESMC central CMDB to import CIs managed in the Campus LAN element management system.	High

	Interface ID	Service Description	Interface Instance Description	Level of Detail (High/Low level)
SMC	ON-SMC-CI-L10 <i>Request direction:</i> <i>ESMC → CPS</i> <i>Data flow direction:</i> <i>ESMC ← CPS</i>	Enterprise CI Discovery and CMDB → Discovery – used to discover the service CIs and related attributes	This interface is required to allow the ESMC Discovery component to perform a discovery of the elements which make up the Campus LAN service. The interface standard is likely to be SNMP v3.	High
SMC	ON-SMC-M-L11	Enterprise Monitoring and Management -> used to receive events and alerts from the Campus LAN monitoring system. (Direct monitoring by ESMC can be achieved using ON-SMC-M-L12 – local or remote agent based monitoring)		High
SMC	ON-SMC-R-L01	Enterprise Request Management -> Incidents – used to enable the creation of incidents for Campus LAN and its components		High
SMC	ON-SMC-R-L02	Enterprise Request Management -> Request Fulfilment – used to enable the creation of service requests for new, or modifications to, Campus LAN service		High
SMC	ON-SMC-R-L03	Enterprise Request Management -> Change Management – used to enable the creation of Change requests for new, or modifications to, Campus LAN		High
CS	ON-NPKI-VAL-L01	NPKI Certificate Validation Services	CRL checking (as required for the certificate based authentication to the network access control)	Low

2.25. Client Provisioning Services (CPS) User Profile Services-Consumer

	Interface ID	Service Description	Interface Instance Description	Level of Detail (High/Low level)
SMC	ON-SMC-CI-L09	Enterprise CI Discovery and CMDB -> CMDB – used to enable the creation/updating of CIs and related data managed inside (internal databases and/or repositories) User Profile Services components	Depending on the final solution implemented to manage user profiles across workstation types and locations, it is likely an interface will be needed to populate the central CMDB with User Profile CI information	High
SMC	ON-SMC-M-L11	Enterprise Monitoring and Management -> used to receive events and alerts from the User Profile management system. (Direct monitoring by ESMC can be achieved using ON-SMC-M-L12 – local or remote agent based monitoring)		High
SMC	ON-SMC-R-L01	Enterprise Request Management -> Incidents – used to enable the creation of incidents for User Profile Services and its components		High
SMC	ON-SMC-R-L02	Enterprise Request Management -> Request Fulfilment – used to enable the creation of service requests for new, or modifications to, User Profile Services		High
SMC	ON-SMC-R-L03	Enterprise Request Management -> Change Management – used to enable the creation of Change requests for new, or modifications to, User Profile Services		High

2.26. Client Provisioning Services (CPS) Print and Scan Services - Consumer

	Interface ID	Service Description	Interface Instance Description	Level of Detail (High/Low level)
SMC	ON-SMC-CI-L09	Enterprise CI Discovery and CMDB → CMDB – used to enable the creation/updating of CIs and related data managed inside (internal databases and/or repositories) Print and Scan components	This interface will be used to enable the population of the central CMDB with CI information from the Print and Scan Services Element Management Systems	High
SMC	ON-SMC-CI-L10	Enterprise CI Discovery and CMDB → Discovery – used to discover the service CIs and related attributes	This interface will enable the discovery of CI information from the Print and Scan Services elements. The interface standard to be used is primary SNMP v3, but can also include SSH and a REST based API	High
SMC	ON-SMC-M-L11	Enterprise Monitoring and Management → used to receive events and alerts from Print and Scan Services element management systems. (Direct monitoring by ESMC can be achieved using ON-SMC-M-L12 – local or remote agent based monitoring)	Used to enable the monitoring of availability, capacity, and other key service health metrics	High
SMC	ON-SMC-R-L01	Enterprise Request Management → Incidents – used to enable the creation of incidents for Print and Scan Services and its components		High
SMC	ON-SMC-R-L02	Enterprise Request Management → Request Fulfilment – used to enable the creation of service requests for new, or modifications to, Print and Scan Services		High

	Interface ID	Service Description	Interface Instance Description	Level of Detail (High/Low level)
SMC	ON-SMC-R-L03	Enterprise Request Management -> Change Management – used to enable the creation of Change requests for new, or modifications to, Print and San Services		High
CS	ON-CS-PAM-L01	Privileged Access Management (PAM)	Session Proxy	High
CS	ON-CS-PAM-L05	Privileged Access Management (PAM)	Track & Secure Privileged Accounts	High
CS	ON-CS-EL-L02	Enterprise Logging	Syslog log collection	Low
CS	ON-NPKI-REG-L01	NPKI Certificate Enrolment Services	Device Certificate for printers (to be used for certificate based authentication against the network access control)	Low
CS	ON-NPKI-VAL-L01	NPKI Certificate Validation Services	CRL checking	Low

2.27. Print and Scan Contractor-Owned, Contractor-Operated (COCO) services - Provider

	Interface ID	Service Description	Interface Instance Description	Level of Detail (High/Low level)
NDWC	ON-NDWC-PrintScan-L01	Print Scan services	Print Scan services	Low
NDWC	ON-NDWC-PrintScan-L02	Managed Print Security Services	Managed Print Security Services	Low
NDWC	ON-NDWC-PrintScan-L03	Printer Monitoring Services	Printer Monitoring Services	Low

2.28. Privileged Access Management (PAM) – Provider

	Interface ID	Service Description	Interface Instance Description	Level of Detail (High/Low level)
CS	ON-CS-PAM-L01	Session Proxy	Facilitates privileged access request between requestors (human/non-human) and target systems.	High

Interface ID		Service Description	Interface Instance Description	Level of Detail (High/Low level)
CS	ON-CS-PAM-L02	Web interface	Facilitates privileged access request between requestors (human), via a web-based interface.	High
CS	ON-CS-PAM-L03	Record & Audit	Facilitates auditing and risk management.	High
CS	ON-CS-PAM-L04	Client-based agents	Locally cached privileged credentials.	High
CS	ON-CS-PAM-L05	Track & Secure Privileged Accounts	Facilitates the tracking & securing of privileged accounts of target systems, also called discovery scans.	High
CS	ON-CS-PAM-L06	Policy engine	Administrators can set the policies for the PAM solution.	High
CS	ON-CS-PAM-L07	Connectors/Plug-ins	Defines connectors/plugin-ins on the PAM system, which enable connectivity to targets systems.	High
CS	ON-CS-PAM-L08	Target-based agents	Some PAM implementations require agents to be installed on target devices.	High
CS	ON-CS-PAM-L09	User Entity and Behaviour Analytics (UEBA)	This logical interface defines UEBA.	High
CS	ON-CS-PAM-L10	PAM AD	PAM AD	High

2.29. Privileged Access Management (PAM) – Consumer

	Interface ID	Service Description	Interface Instance Description	Level of Detail (High/Low level)
ECS	ON-ECS-DIR-L05	DNS	The domain name system (DNS) provides and maintains domain names and translates them into Internet Protocol (IP) addresses.	High
ECS	ON-ECS-DIR-L06	NTP	Network Time Protocol Service	High
IaaS	ON-Infra-NETW-L04	SNMP	Simple Network Management Protocol (SNMP) provides services for the management and monitoring of network-connected devices.	High
IaaS	ON-Infra-NETW-L04	ICMP	The Internet Control Message Protocol (ICMP).	High
[NATO Enterprise]	[NATO Enterprise] NEDS	Identity Services		High
ECS	ON-ECS-Email-L01	Email Services		High
IaaS	ON-Infra-Stor-P02	Storage Services		High
CS	ON-NPKI-REG-L01	Certificates (for application authentication)		High
CS	ON-NPKI-VAL-L01	Certificates (for application authentication)		High
ECS	ON-ECS-DIR-L01	Active Directory	Active Directory	High

2.30. Campus LAN – Provider

	Interface ID	Service Description	Interface Instance Description	Level of Detail (High/Low level)
CampusLAN	ON-CampusLAN-DNAC-L01	DNAC	Provides services between all campus network switches to orchestrate Software Defined Access (SD-A)	High
CampusLAN	ON-CampusLAN-Access-L01	CampusLAN	Provides services between Access and Core switches in the Campus network.	High
CampusLAN	ON-CampusLAN-OOB-L01	OOB	Provides management services for the Core switches in the Campus LAN.	High
CampusLAN	ON-CampusLAN-ISE-L01	Cisco ISE	Provides a link between customer's identities, devices they are using, their location and their access method to the network.	High

2.31. Campus LAN – Consumer

	Interface ID	Service Description	Interface Instance Description	Level of Detail (High/Low level)
[NATO Enterprise]	[NATO Enterprise] NCI WAN	NATO Communication Infrastructure WAN	Services to connect Campus LAN, BPS and NCI domains.	High
[NATO Enterprise]	[NATO Enterprise] NPKI	NATO Public Key Infrastructure	The NATO PKI manages digital certificates for the NATO Enterprise.	High
CS	ON-NPKI-REG-L01	Certificates (for authentication)	Automatic PKI enrolment and upgrades.	High
CS	ON-NPKI-VAL-L01	Certificates (for authentication)	NPKI Certificate Validation Services.	High

Interface ID		Service Description	Interface Instance Description	Level of Detail (High/Low level)
CS	ON-CS-PAM-L01	Session Proxy	Facilitates privileged access request between requestors (human/non-human) and target systems. AAA (Authentication, Authorization and Accounting) based on user profiles.	High
CS	ON-CS-PAM-L05	Track & Secure Privileged Accounts	Facilitates the tracking & securing of privileged accounts of target systems, also called discovery scans.	High

2.32. Cyber Security (CS) Services – Provider

Interface ID		Service Description	Interface Instance Description	Level of Detail (High/Low level)
CS	ON-CS-EL-L01	Enterprise Logging	Agent Based Log collection	Low
CS	ON-CS-EL-L02	Enterprise Logging	Syslog log collection	Low
CS	ON-CS-EL-L03	Enterprise Logging	Special (log) collection	High
CS	ON-CS-EL-L06	Enterprise Logging	Used to send incidents matching certain criteria to CS SIEM	High
CS	ON-CS-EL-L08	Enterprise Logging	Used to send incidents matching certain criteria to CS SIEM	High
CS	ON-CS-PAM-L01	Privileged Access Management (PAM)	Session Proxy	High
CS	ON-CS-PAM-L05	Privileged Access Management (PAM)	Track & Secure Privileged Accounts	High
CS	ON-NPKI-REG-L01	NPKI Certificate Enrolment Services	Device certificates	Low
CS	ON-NPKI-VAL-L01	NPKI Certificate Validation Services	CRL checking	Low

	Interface ID	Service Description	Interface Instance Description	Level of Detail (High/Low level)
CS	ON-CS-GW-L01	Gateway to external CIS	General logical interface for use of the gateway. Needs to be replaced by a sub-interface depending on the actual GW component that is used by 'Email Messaging' in addition to the Proofpoint gateway.	High
CS	ON-CS-DD-L31	Data Diode Service	Data Diode Service Transfer of files via file sharing (NU > NS).	Low
CS	ON-CS-DD-L35	Data Diode Service	Data Diode Service Transfer of email. Interface on ON to receive e-mail from a low domain.	Low
CS	ON-CS-UDC-L01	User and Device Credentials	Identity data retrieval	High
CS	ON-CS-UDC-L08	User and Device Credentials	Service Initialisation (RDSH Server certificate)	High

2.33. Cyber Security (CS) Services Cyber Security Monitoring – Provider

	Interface ID	Service Description	Interface Instance Description	Level of Detail (High/Low level)
CS	ON-CS-M-P01	Cyber Security Monitoring	Soft Sensor Physical Connection	High
CS	ON-CS-M-P02	Cyber Security Monitoring	SPAN Port Network Packet Transfer	High
CS	ON-CS-M-P03	Cyber Security Monitoring	Tapped Network Packet Transfer	High
CS	ON-CS-M-P04	Cyber Security Monitoring	Inline Network Packet Transfer	High
CS	ON-CS-M-L01	Cyber Security Monitoring	Log Aggregation	High
CS	ON-CS-M-L02	Cyber Security Monitoring	Online Vulnerability Assessment	High
CS	ON-CS-M-L03	Cyber Security Monitoring	Online Computer Forensics	High

	Interface ID	Service Description	Interface Instance Description	Level of Detail (High/Low level)
CS	ON-CS-M-L04	Cyber Security Monitoring	Firewall Logs and Alerts	High
CS	ON-CS-M-L06	CS Cyber Security Monitoring	Used to trigger automation of changes and control changes	High

2.34. Cyber Security (CS) Services Cyber Security Monitoring – Consumer

	Interface ID	Service Description	Interface Instance Description	Level of Detail (High/Low level)
CS	ON-CS-EL-L01	Enterprise Logging	Agent Based Log collection	Low
CS	ON-CS-EL-L02	Enterprise Logging	Syslog log collection	Low
CS	ON-CS-EL-L03	Enterprise Logging	Special (log) collection	High
CS	ON-CS-PAM-L01	Privileged Access Management (PAM)	Session Proxy	High
CS	ON-CS-PAM-L05	Privileged Access Management (PAM)	Track & Secure Privileged Accounts	High
CS	ON-NPKI-REG-L01	NPKI Certificate Enrolment Services	Device certificates	Low
CS	ON-NPKI-VAL-L01	NPKI Certificate Validation Services	CRL checking	Low

2.35. Infrastructure as a Service (IaaS) - Provider

	Interface ID	Service Description	Interface Instance Description	Level of Detail (High/Low level)
IaaS	ON-Infra-VMProvision-L01	Virtual Machine (VM) provisioning	VMs for the application packaging service.	High
IaaS	ON-Infra-Proc-L01	IaaS Processing Services, virtualized	VM with features such as Zoning	High
IaaS	ON-Infra-Proc-P01	IaaS Processing Services	Physical server	High

	Interface ID	Service Description	Interface Instance Description	Level of Detail (High/Low level)
IaaS	ON-Infra-Stor-L02	IaaS Storage Services, virtualized block storage	With pre-defined capacity, policy-based performance and policy based QoS (Typically provisioned in one bundle with processing)	High
IaaS	ON-Infra-Stor-P02	IaaS Storage Services, physical block storage	Currently no customer defined (there is a reservation in the PP to provision this)	High
IaaS	ON-Infra-Backup-L03	IaaS Backup Services	Backup services, snapshotting of VM and storage instances, and other data backup	High
IaaS	ON-Infra-Archive-L05	IaaS Archiving Services	Provided as object storage for long term retention (including long term retention of backups)	High
IaaS	ON-Infra-NETW-L04	IaaS Networking Services	Infrastructure switching Load-balancing DNS (including DNSsec) DHCP IPAM Border protection Micro segmentation Security zoning	Low Micro segmentation High
IaaS	ON-Infra-Proc-P01	IaaS Processing Services, dedicated environment	Physical server specific endpoint group, specific zoning	High
IaaS	ON-Infra-Mon-L01	Monitor the servers (alive, availability, capacity management-forecasting)	Domain and Element SMC	High

2.36. Infrastructure as a Service (IaaS) - Consumer

	Interface ID	Service Description	Interface Instance Description	Level of Detail (High/Low level)
[NATO Enterprise]	[NATO Enterprise] NCI WAN (SIOP-5-NS)	Coloured Cloud Access Service, ON	Wide area connection IPv4/IPv6, QoS, Networking constraints MTU, IPTD, capacity	High
[NATO Enterprise]	[NATO Enterprise] NCI WAN (ON-NCI-DCI)	Data Centre Interconnect	L2 interconnect between DC instances Networking constraints, MTU, transfer delay, capacity	Low
SMC	ON-SMC-CI-L09	Enterprise CI Discovery and CMDB → CMDB – used to enable the creation/updating of CIs and related data managed inside (internal databases and/or repositories)	Through API of DSMS	Low (data interface will be provided by WP11)
SMC	ON-SMC-CI-L10	Enterprise CI Discovery and CMDB → Discovery – used to discover the service CIs and related attributes	Discovery through BMC ADDM (?) in combination with DSMS made up of VCenter, Cisco Nexus dashboard, VEEAM, Panorama, etc.	Low (data interface will be provided by WP11)
SMC	ON-SMC-M-L11	Enterprise Monitoring and Management	Monitoring and eventing through API from DSMS made up of VCenter, Cisco Nexus dashboard, VEEAM, Panorama, CA Spectrum, etc.	Low (data interface will be provided by WP11)
SMC	ON-SMC-R-L01	Request fulfilment	Creation of DB based on template CRQ driven, instance creation manual process	High
SMC	ON-SMC-DML-L13	EDML/Repository	Library of all IaaS SDDC elements	High
SMC	ON-SMC-DML-L14	Orchestration and automation	Potential integration. Shall be driven by infrastructure as code concept	High

Interface ID		Service Description	Interface Instance Description	Level of Detail (High/Low level)
CS	ON-CS-M-P01	Cyber Security Monitoring	Soft Sensor Physical Connection	High
CS	ON-CS-M-P02	Cyber Security Monitoring	SPAN Port Network Packet Transfer	High
CS	ON-CS-M-P03	Cyber Security Monitoring	Tapped Network Packet Transfer	High
CS	ON-CS-M-P04	Cyber Security Monitoring	Inline Network Packet Transfer	High
CS	ON-CS-M-L01	Cyber Security Monitoring	Log Aggregation	High
CS	ON-CS-M-L02	Cyber Security Monitoring	Online Vulnerability Assessment	High
CS	ON-CS-M-L03	Cyber Security Monitoring	Online Computer Forensics	High
CS	ON-CS-M-L04	Cyber Security Monitoring	Firewall Logs and Alerts	High
CS	ON-CS-EL-L01	Enterprise Logging	Agent Based Log collection	High
CS	ON-CS-EL-L02	Enterprise Logging	Syslog log collection (For any IaaS management server or infrastructure device that is not able to support the Splunk universal forwarder agent.)	Low
CS	ON-CS-PAM-L01	Privileged Access Management (PAM)	Session Proxy	High
CS	ON-CS-PAM-L05	Privileged Access Management (PAM)	Track & Secure Privileged Accounts	High
CS	ON-NPKI-REG-L01	NPKI Certificate Enrolment Services	Service Initialisation (DNS Server certificate for DNSSEC)	Low
CS	ON-NPKI-REG-L01	NPKI Certificate Enrolment Services	Device Initialisation	Low
CS	ON-NPKI-VAL-L01	NPKI Certificate Validation Services	CRL checking	Low

Interface ID	Service Description	Interface Instance Description	Level of Detail (High/Low level)
CS	ON-CS-DD-L31	Data Diode Service Data Diode Service Transfer of files via file sharing. Required for: - export of SDDC/SDN element from NSF to ON (in support of Infrastructure as Code); - file transfer from low domains to ON (e.g. as part of lifecycle management to transfer patches/firmware/updates etc.)	High
NATO Enterprise	[NATO Enterprise] Facilities Management System	Facilities Management System	Patch Manager, Cormant CableSolve, SE DataCentre Expert
NATO Enterprise	[NATO Enterprise] Asset Management	Asset Management	Enterprise Business Application (EBA)
NATO Enterprise	[NATO Enterprise] Configuration Management	Configuration Management	NISC Configuration Management

2.37. Enterprise SMC - Provider

Interface ID	Service Description	Interface Instance Description	Level of Detail (High/Low level)
SMC	ON-SMC-M-L01	Enterprise Monitoring and Management	E-SMC (RESTful API) interface to receive service (and related components) monitoring data and alerts

Interface ID		Service Description	Interface Instance Description	Level of Detail (High/Low level)
SMC	ON-SMC-R-L01	Enterprise Request Management	API to enable create, read, and update of Incident Management records	High
SMC	ON-SMC-R-L02	Enterprise Request Management	API to enable create, read, and update of Request Fulfilment records	High
SMC	ON-SMC-R-L03	Enterprise Request Management	API to enable create, read, and update of Change Management records	High
SMC	ON-SMC-R-L04	Enterprise Request Management	API to enable create, read, and update of Problem Management records	High
SMC	ON-SMC-R-L05	Enterprise Request Management	API to enable create, read, and update of Release and Deployment Management records	High
SMC	ON-SMC-R-L06	Enterprise Request Management	API to enable create, read, and update of Service Asset and Configuration Management records	High
SMC	ON-SMC-CI-L09	Enterprise CI Discovery and CMDB	API to enable create, read, and update of CIs and CI information in the CMDB	High
SMC	ON-SMC-CI-L10	Enterprise CI Discovery and CMDB	API to query discovery tool internal database, and trigger discovery jobs	High
SMC	ON-SMC-M-L11	Enterprise Monitoring and Management	API to receive performance, capacity, and event information in predefined XML format	High
SMC	ON-SMC-M-L12	Enterprise Monitoring and Management	Agent based interface used to collect performance and capacity data, and event information	High

	Interface ID	Service Description	Interface Instance Description	Level of Detail (High/Low level)
SMC	ON-SMC-DML-L13	Electronic DML	File system interface to the DML	High
SMC	ON-SMC-DML-L14	Electronic DML	Electronic download interface to the DML	High

2.38. Enterprise SMC - Consumer

	Interface ID	Service Description	Interface Instance Description	Level of Detail (High/Low level)
CS	ON-CS-PAM-L07/08-SMC-R	CS Privileged Access Management	Used to enable control of privileged access to Enterprise Request Management	High
CS	ON-CS-EL-01-SMC-R	CS Enterprise Logging	Enable the collection of key Enterprise Request Management logs	High
ECS	ON-ECS-DIR-L01-SMC-R	ECS Directory Services	Enable the Enterprise Request Management service to access user and group objects in AD using LDAP/S	Low
IaaS	ON-Infra-Backup-L03-SMC-R	IaaS Backup	Enable use of IaaS backup services by the Enterprise Request Management service	Low
IaaS	ON-Infra-Archive-L05-SMC-R	IaaS Archive Storage	Enable retention of Enterprise Request Management data in accordance with policy	Low
IaaS	ON-Infra-Proc-L01-SMC-R	IaaS Processing	Enable Enterprise Request Management to use compute resources via virtual machines	Low
IaaS	ON-Infra-Stor-L02-SMC-R	IaaS Storage	Enable Enterprise Request Management to use storage resources via virtual machines	Low

	Interface ID	Service Description	Interface Instance Description	Level of Detail (High/Low level)
IaaS	ON-Infra-Netw-L04-SMC-R	IaaS Networking: DNS, load balancing, IPAM, switching, BPS, security zone,	Enable Enterprise Request Management to use networking services via virtual machines	Low
IaaS	ON-Infra-Mon-L01-SMC-R	IaaS Infrastructure Domain SMC	Enables Enterprise Request management to trigger IaaS automations as part of approved requests	High
CPS	ON-CPS-MON-L01-SMC-R	CPS Client Provisioning Domain SMC	Enables Enterprise Request management to trigger IaaS automations as part of approved requests	High
ECS	ON-ECS-Mon-L01-SMC-R	ECS Core Services Domain SMC	Enables Enterprise Request management to trigger IaaS automations as part of approved requests	High
CS	ON-CS-EL-L06-SMC-R	CS Cyber Security Monitoring	Used to trigger automation of changes and control changes	High
ECS	ON-ECS-Email-L01-SMC-R	ECS Email Transport	Enables Enterprise Request Management to send emails	Low
ECS	ON-ECS-Email-L02-SMC-R	ECS Email Mailbox Access	Enables Enterprise Request Management to receive emails	Low
CPS	ON-CPS-AppDelivery-L01/L02-SMC-R	CPS Application Provisioning	Enable the triggering of application provisioning to end-user device	High
CPS	ON-CPS-ThinClient-L01-SMC-R	CPS Desktop Provisioning	Enable to triggering of Thin Client related automations based on approved requests	High
CS	ON-CS-EL-L06/L08-SMC-R	CS Cyber Security Monitoring	Used to send incidents matching certain criteria to CS SIEM	High

Interface ID		Service Description	Interface Instance Description	Level of Detail (High/Low level)
ECS	ON-ECS-Web-L01-SMC-R	ECS Portal Services	Enable the triggering of portal services provisioning automation based on an approved requests	High
ECS	ON-ECS-Email-L02-SMC-R	ECS Email Mailbox Access	Enable the triggering of email provisioning automation based on an approved request	High
ECS	ON-ECS-Web-L03-SMC-R	ECS Web hosting, Tomcat	Used to enable Enterprise Request Management java based web application and user interfaces	Low
ECS	ON-ECS-DB-L01-SMC-R	ECS Database – MS SQL	Provides database service for use by Enterprise SMC service	Low
IREEN	ON-IREEN-xx-xx-SMC-R	IREEN	Used to trigger and support the automation of IREEN services provisioning	High
CS	ON-CS-PAM-L07/08-SMC-SSO	CS Privileged Access Management	Used to enable privileged access management to Enterprise SMC service components	High
CS	ON-CS-EL-01-SMC-R-SMC-SSO	CS Enterprise Logging	Used to enable auditing of access and privilege use in the Enterprise SMC service components	High
ECS	ON-ECS-DIR-L01-SMC-SSO	ECS Directory Services [AD]	Used to query admin user information and group information	Low
ECS	ON-ECS-DIR-L02-SMC-SSO	ECS Directory Services [ADFS]	Used to support claims based authentication of federated/external users	Low
[NATO Enterprise]	[NATO Enterprise] NEDS	[NATO Enterprise] NEDS	Used to access user identify information for Enterprise Request Management	High

	Interface ID	Service Description	Interface Instance Description	Level of Detail (High/Low level)	
	[NATO Enterprise]	[NATO Enterprise] NEDS	Used to access user identify information for Enterprise SMC Access Management	High	
	IaaS	ON-Infra-Backup-L03-SMC-SSO	IaaS Backup	Enable use of IaaS backup services by the Enterprise SMC Access Management service	Low
	IaaS	ON-Infra-Archive-L05-SMC-SSO	IaaS Archive Storage	Enable retention of Enterprise SMC Access Management data in accordance with policy	Low
	IaaS	ON-Infra-Proc-L01-SMC-SSO	IaaS Processing	Enable Enterprise SMC Access Management to use compute resources via virtual machines	Low
	IaaS	ON-Infra-Stor-L02-SMC-SSO	IaaS Storage	Enable Enterprise SMC Access Management to use storage resources via virtual machines	Low
	IaaS	ON-Infra-Netw-L04-SMC-SSO	IaaS Networking: DNS, load balancing, IPAM, switching, BPS, security zone,	Enable Enterprise SMC Access Management to use networking services via virtual machines	Low
	ECS	ON-ECS-Web-L03-SMC-SSO	ECS Web hosting, Tomcat	Used to enable Enterprise SMC Access Management java based web application and user interfaces	Low
	ECS	ON-ECS-DB-L01-SMC-SSO	ECS Database – MS SQL	Provides database service for use by Enterprise SMC Access Management service	Low
	IaaS	ON-Infra-Backup-L03-SMC-CI	IaaS Backup	Enable use of IaaS backup services by the Enterprise CI Discovery and CMDB service	Low

	Interface ID	Service Description	Interface Instance Description	Level of Detail (High/Low level)
IaaS	ON-Infra-Archive-L05-SMC-CI	IaaS Archive Storage	Enable retention of Enterprise CI Discovery and CMDB data in accordance with policy	Low
IaaS	ON-Infra-Proc-L01-SMC-CI	IaaS Processing	Enable Enterprise CI Discovery and CMDB to use compute resources via virtual machines	Low
IaaS	ON-Infra-Stor-L02-SMC-CI	IaaS Storage	Enable Enterprise CI Discovery and CMDB to use storage resources via virtual machines	Low
IaaS	ON-Infra-Netw-L04-SMC-CI	IaaS Networking: DNS, load balancing, IPAM, switching, BPS, security zone,	Enable Enterprise CI Discovery and CMDB to use networking services via virtual machines	Low
[NATO Enterprise]	AIS-NCI-SMC-Lxx-SMC-CI	[NATO Enterprise] Network Management CMS	Enable the import of CIs to the CMDB	High
CS	AIS-CS-SIEM-Lxx-SMC-CI	[NATO Enterprise] Information Assurance CMS	Enable the import of CIs to the CMDB	High
[NATO Enterprise]	[NATO Enterprise] NEDS	[NATO Enterprise] NEDS	Used to import user information from the Identity and Access Management System into the CMDB	High
NISC	NISC-PatchM-Lxx-SMC-CI	[NATO Enterprise] Patch Manager	Used to import CIs to the CMDB	High
SMC	AIS-SMC-CableS-Lxx-SMC-CI	[NATO Enterprise] CormantCS	Used to Import CIs to the CMDB	High
SSBA EBA	AIS-SSBA-EBA-Lxx-SMC-CI	[NATO Enterprise] EBA	Used to import CIs to the CMDB	High
NISC SAM	NISC-SAM-L01-SMC-CI	[NATO Enterprise] Software Asset Management system (SmartTrack)	Used to import CIs to the CMDB	High
IaaS	ON-Infra-Backup-L03-SMC-M	IaaS Backup	Enable use of IaaS backup services by the Enterprise Monitoring and Management service	Low

	Interface ID	Service Description	Interface Instance Description	Level of Detail (High/Low level)
IaaS	ON-Infra-Archive-L05-SMC-M	IaaS Archive Storage	Enable retention of Enterprise Monitoring and Management data in accordance with policy	Low
IaaS	ON-Infra-Proc-L01-SMC-M	IaaS Processing	Enable Enterprise Monitoring and Management to use compute resources via virtual machines	Low
IaaS	ON-Infra-Stor-L02-SMC-M	IaaS Storage	Enable Enterprise Monitoring and Management to use storage resources via virtual machines	Low
IaaS	ON-Infra-Netw-L04-SMC-M	IaaS Networking: DNS, load balancing, IPAM, switching, BPS, security zone,	Enable Enterprise Monitoring and Management to use networking services via virtual machines	Low
ECS	ON-ECS-Web-L03-SMC-M	ECS Web hosting, Tomcat	Used to enable Enterprise Monitoring and Management java based web application and user interfaces	Low
ECS	ON-ECS-DB-L01-SMC-M	ECS Database – MS SQL	Provides database service for use by Enterprise Monitoring and Management service	Low
IaaS	ON-Infra-Mon-L01-SMC-M	IaaS Infrastructure Domain SMC	Enable the transfer of performance, event, and alert information to Enterprise Monitoring and Management	High
CPS (and ECS)	ON-CPS-Mon-L01-SMC-M	CPS Client Provisioning Domain SMC	Enable the transfer of performance, event, and alert information to Enterprise Monitoring and Management	High

	Interface ID	Service Description	Interface Instance Description	Level of Detail (High/Low level)
NISC FM	AIS-CES-DCMon-Lxx-SMC-M	[Non-ITM] Facility Management System	Used to monitor DC environmental performance as well as query further information	High
CES	AIS-CES-PatchM-Lxx-SMC-M	[Non-ITM] Patch Manager	Used to monitor DC capacity as well as query further information	High
ECS	ON-ECS-Email-L01-SMC-M	ECS Email Transport	Enterprise Monitoring and Management to send emails	Low
IREEN	ON-IREEN-xx-xx-SMC-M	IREEN	Used to monitor performance, availability, and capacity as well as query further information and execute predefined scripts/actions	High
ECS	ON-ECS-Web-L01-SMC-M	ECS Portal Services	Used to support forecasting and proactive actions	High
ECS	ON-ECS-Email-L02-SMC-M	ECS Email Messaging	Used to collect events, view trends, monitor capacity, perform forecasting, and alerting	High
ECS	ON-ECS-DIR-L03-SMC-DML	ECS Distributed File share Service	Used to store and retrieve application packages in support of application provisioning	Low
IaaS	ON-Infra-Stor-L02-SMC-DML	IaaS Infrastructure Storage	Used to underpin the DFS DML file shares.	Low

2.39. Enterprise Core Services (ECS) IREEN Portal Services - Consumer

Interface ID		Service Description	Interface Instance Description	Level of Detail (High/Low level)
ECS	NU-ECS-Time-L01	Network Time Service	Clock synchronization IREEN @ NU: Use CFBLNet services	

Interface ID		Service Description	Interface Instance Description	Level of Detail (High/Low level)
CS	NU-NPKI-REG-L01	NPKI Certificate Enrolment Services	Only IREEN ON @ NU; Use PKI Testbed if PKI Reference is not available Service certificate	Low
CS	NU-NPKI-VAL-L01	NPKI Certificate Validation Services	CRL checking	Low

2.40. Enterprise Core Services (ECS) IREEN Database Services - Consumer

Interface ID		Service Description	Interface Instance Description	Level of Detail (High/Low level)
CS	NU-NPKI-REG-L01	NPKI Certificate Enrolment Services	Only IREEN ON @ NU; Use PKI Testbed if PKI Reference is not available Service certificate	Low
CS	NU-NPKI-VAL-L01	NPKI Certificate Validation Services	CRL checking	Low

2.41. Enterprise Core Services (ECS) IREEN Directory Services - Consumer

Interface ID		Service Description	Interface Instance Description	Level of Detail (High/Low level)
CS	NU-NPKI-REG-L01	NPKI Certificate Enrolment Services	For IREEN ON @ NU, use PKI Testbed if PKI Reference is not available; Server certificate	Low
CS	NU-NPKI-VAL-L01	NPKI Certificate Validation Services	CRL checking	Low
CS	ON-NPKI-REG-L01	NPKI Certificate Enrolment Services	For IREEN ON @ NS, use AIS PKI if PKI Reference is not available; Server certificate	Low

CS	ON-NPKI-VAL-L01	NPKI Certificate Validation Services	CRL checking	Low
----	-----------------	--------------------------------------	--------------	-----

2.42. Client Provisioning Services (CPS) IREEN Desktop Provisioning - Provider

	Interface ID	Service Description	Interface Instance Description	Level of Detail (High/Low level)
CPS	ON-CPS-Desktop-L01	CPS Desktop Service	Interface to CFBLNet	High
CPS	ON-CPS-ThinClient-L01	Thin Client	CPS Infra Interface to CFBLNet	High

2.43. Client Provisioning Services (CPS) IREEN Desktop Provisioning - Consumer

	Interface ID	Service Description	Interface Instance Description	Level of Detail (High/Low level)
Campus LAN	ON-CampusLAN-Access-L01	Campus LAN	For IREEN ON @ NU: Use CFBLNet and NOT Campus LAN; For IREEN ON @ NS: Depending on design decision use Campus LAN or CFBLNet	High

2.44. Client Provisioning Services (CPS) IREEN Application Provisioning - Consumer

	Interface ID	Service Description	Interface Instance Description	Level of Detail (High/Low level)
CampusLAN	ON-LAN-UNI-L01	Campus LAN	For IREEN ON @ NU: Use CFBLNet and NOT Campus LAN; For IREEN ON @ NS: Depending on design decision use Campus LAN or CFBLNet	High

NATO Enterprise Services	[NATO Enterprise] Trusted Container Registry Service	Master Container Registry Service	All Container Driven Services shall interface to this Master Container Registry Service.	Low
---------------------------------	--	-----------------------------------	--	-----

2.45. Infrastructure as a Service (IaaS) IREEN Service - Provider

Interface ID		Service Description	Interface Instance Description	Level of Detail (High/Low level)
IaaS	ON-Infra-NETW-L04	IaaS Networking Services	Infrastructure switching Load-balancing DNS (including DNSsec) DHCP IPAM Border protection Micro segmentation Security zoning FOR IREEN ON @ NS: Provide emulated interfaces between 1 DC and respective EN; For IREEN ON @ NU: Provide emulated interfaces between 2DCs, their respective ONs and one or more emulated RNs	Low Micro segmentation on high
IaaS	ON-Infra-NETW-L05	IaaS Networking Services	FOR IREEN ON @ NS: Provide interface to CFBLNet RED (TBC); For IREEN ON @ NU: Provide interface to CFBLNet NUE; Provide interface to NCI Reference or POC Testbed	High

2.46. Infrastructure as a Service (IaaS) IREEN Service ON@NU-Consumer

Interface ID		Service Description	Interface Instance Description	Level of Detail (High/Low level)
NATO Enterprise Services	[NATO Enterprise] NSF Public Cloud	NATO Software Factory (NSF) Computer Information System (CIS)	NSF is NCI Agency 'Development and Integration Environment', in order to develop and test software based components.	High
	[NATO Enterprise] Trusted Container Registry Service	Master Container Registry Service	All Container Driven Services shall interface to this Master Container Registry Service.	High

2.47. Application Packaging Services – Provider

Interface ID		Service Description	Interface Instance Description	Level of Detail (High/Low level)
ECS	ON-ECS-PCKG-L1	Application Packaging	Application packaging provided interface. Packages from the packaging service end up in the SMC repository via this interface.	High
SMC	ON-SMC-DML-L14	SMC - EDML	The initial data can be downloaded from EDML to start the packaging prior to User Migration.	High
CS	ON-CS-UDC-L08	NPki Infrastructure	PKI certificates required to sign the package, trusted on ON.	High
SMC	ON-SMC-R-L02	SMC – ITSM – Service request API	ITSM Toolset - SDM Packaging Request	High
SMC	ON-SMC-R-L03	SMC – ITSM – Change Management API	AFPL Approval triggering MSIX signature with the certificate trusted in production.	High

Interface ID		Service Description	Interface Instance Description	Level of Detail (High/Low level)
SMC	ON-SMC-DML-L13	SMC - EDML	Repository offered by SMC to hold the packages and deployment packages for future provisioning	High

2.48. Application Packaging Services – Consumer

Interface ID		Service Description	Interface Instance Description	Level of Detail (High/Low level)
IaaS	ON-Infra-VMProvision-L1	Virtual Machine (VM) provisioning	VMs for the application packaging service.	High
NATO Enterprise Services	[NATO Enterprise] Trusted Container Registry Service	Master Container Registry Service	All Container Driven Services shall interface to this Master Container Registry Service.	Low

2.49. Business Areas Application Services – Provider

Application services provide application specific services developed in accordance with the Agency's directives. As these services are not directly consumed by ITM capabilities, for an in-depth snapshot of the Application Services, please refer to the APMPs.

2.50. Business Areas Application Services – Consumer

Interface ID		Service Description	Interface Instance Description	Level of Detail (High/Low level)
ECS	ON-ECS-Email-L01	Email Transport		High
ECS	ON-ECS-Email-L02	Mailbox Access		Low
ECS	ON-ECS-Email-L03	Calendaring Data Services		Low

Interface ID		Service Description	Interface Instance Description	Level of Detail (High/Low level)
ECS	ON-ECS-Web-L01	Web Hosting	<p>PLT003 Web Hosting Service</p> <p>Microsoft SharePoint Server, with components of:</p> <ul style="list-style-type: none"> - Office Online Server - Microsoft Workflow Manager <p>Consumers of PLT003 Web Hosting Service can be found in the APMPs: NS APMP A6335 SharePoint Server CENTRAL</p> <p>Unit of Provision is based on data size. The flavour is dedicated and shared.</p>	<p>Low</p> <p>The installation/configuration of Web Hosting will be overseen by an Agency engineer at all times.</p>
ECS	ON-ECS-Web-L02	Web Hosting	<p>Internet Information Service (IIS)</p> <p>EFF: E-Forum Factory (NCIA Website) Performance Management</p> <p>K2 Workflow Service</p>	Low
ECS	ON-ECS-Web-L03	Web Hosting	<p>Apache Tomcat</p> <p>Consumers of Web Hosting Apache Tomcat:</p> <ul style="list-style-type: none"> - ITSM 	Low
ECS	ON-ECS-Web-L04	Web Hosting	<p>Oracle Web Logic</p> <p>Oracle Web Logic requires a Dedicated Farm.</p> <p>Consumers of Web Hosting Oracle Web Logic are:</p> <ul style="list-style-type: none"> - APP090 – Enterprise BI and Data Warehouse Service - NNCS 	High

	Interface ID	Service Description	Interface Instance Description	Level of Detail (High/Low level)
ECS	ON-ECS-DB-L01	RDBMS	MS SQL service. PLT006 This will migrate to ON-PaaS-DB (Consumers of MS SQL: - SCOM - SCCM - Skype - Exchange? - SharePoint - EPO McAfee - TITUS - Printing)	Low (HA + sec ref avail)
ECS	ON-ECS-DB-L02	RDBMS	Oracle DB service segregated server farm. PLT006 <u>Not used for WP7 realized services</u>	Low (HA + sec ref avail)
ECS	ON-ECS-DB-L03	RDBMS	Postgress PLT006 <u>Not used for WP7 realized services</u>	Low (HA + sec ref avail)
ECS	ON-ECS-DB-L04	RDBMS	MySQL PLT006 <u>Not used for WP7 realized services</u>	Low (HA + sec ref avail)
ECS	ON-ECS-DIR-L01	Active Directory		
ECS	ON-ECS-DIR-L02	Active Directory Federation Services		High
ECS	ON-ECS-DIR-L03	DFS	High available storage spaces	High
ECS	ON-ECS-CS-WAF-L01	Web Application Firewall (WAF)	WAF proxy	Low
CPS	ON-CPS-Desktop-L01	CPS Desktop Service		High
CPS	ON-CPS-ThinClient-L01	Thin Client	CPS Infra	High
CPS	ON-CPS-AppDelivery-L01	Application Delivery in packages (MSIX) through MECM and VMware App volumes.		High
CPS	ON-CPS-AppDelivery-L02	RDSH service through Microsoft Remote Desktop Services		High

Interface ID		Service Description	Interface Instance Description	Level of Detail (High/Low level)
CPS	ON-CPS-Mon-L01	Monitor the servers (alive, availability, capacity management-forecasting)	Domain and Element SMC	High
CS	ON-CS-PAM-L01	Privileged Access Management (PAM)	Session Proxy	High
CS	ON-CS-GW-L01	Gateway to external CIS	General logical interface for use of the gateway. Needs to be replaced by a sub-interface depending on the actual GW component that is used by 'Email Messaging' in addition to the Proofpoint gateway.	High
CS	ON-CS-DD-L35	Data Diode Service	Data Diode Service Transfer of email. Interface on ON to receive e-mail from a low domain.	Low
CS	ON-CS-EL-L01	Enterprise Logging	Agent Based Log collection	High
CS	ON-CS-EL-L02	Enterprise Logging	Syslog log collection	Low
CS	ON-NPKI-REG-L01	NPKI Certificate Enrolment Services	Application certificates	Low
CS	ON-NPKI-VAL-L01	NPKI Certificate Validation Services	CRL checking	Low
IaaS	ON-Infra-Proc-L01	IaaS Processing Services, virtualized	VM with features such as Zoning	High
IaaS	ON-Infra-Backup-L03	IaaS Backup Services	Backup services, snapshotting of VM and storage instances, and other data backup	High
IaaS	ON-Infra-Archive-L05	IaaS Archiving Services	Provided as object storage for long term retention (including long term retention of backups)	High

Interface ID		Service Description	Interface Instance Description	Level of Detail (High/Low level)
IaaS	ON-Infra-NETW-L04	IaaS Networking Services	Infrastructure switching	Low
			Load-balancing DNS (including DNSsec) DHCP IPAM Border protection Micro segmentation Security zoning	Micro segmentation High

2.51. User Migration and Transition to Operation – Provider

Interface ID		Service Description	Interface Instance Description	Level of Detail (High/Low level)
CPS	ON-CPS-Desktop-L01	CPS Desktop Service	CPS Desktop Service	High
CPS	ON-CPS-ThinClient-L01	CPS Thin Client	CPS Thin Client	High
CPS	ON-CPS-GOLDDATA-L01	WP12.1 Gold Data	WP12.1 Gold Data	Low
[NATO Enterprise]	ON-NPKI-REG-L01	Certificate Enrolment Services	Certificate Enrolment Services	High
[NATO Enterprise]	ON-NPKI-VAL-L01	Certificate Validation Services	Certificate Validation Services	High

2.52. User Migration and Transition to Operation – Consumer

Interface ID		Service Description	Interface Instance Description	Level of Detail (High/Low level)
Application Packaging Service	ON-ECS-PCKG-L1	Application Packaging	Packages from the packaging service end up in the SMC repository via this interface.	High
CampusLAN	ON-CampusLAN-Access-L01	CampusLAN	Provides services between Access and Core switches in the Campus network.	High
SMC	ON-SMC-DML-L13	Electronic DML	Electronic DML	High

	Interface ID	Service Description	Interface Instance Description	Level of Detail (High/Low level)
SMC	ON-SMC-DML-L14	Electronic DML	Electronic download interface to the DML	High